

# TOPEX<sup>®</sup>

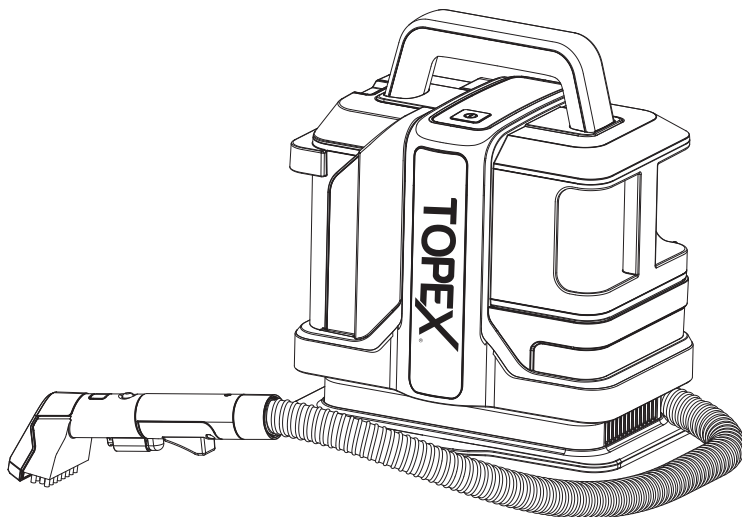
SKU:TXSC450600

**TX600**

# OWNER'S MANUAL


---

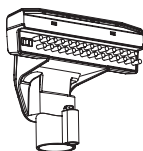
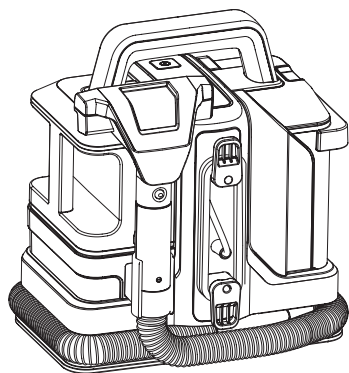
**SPOT CLEANER**



Thank you for buying this **SPOT CLEANER!**  
Please read this manual carefully before using the product.

## DESCRIPTION OF SYMBOLS

v	Volts	Hz	Hertz
~	Alternating current	mm	millimeters
—	Direct current	∅	Diameter
⚠	Warning	Ⓜ	Regulatory Compliance Mark (RCM)
 Read Instruction Manual			



## GENERAL POWER TOOL SAFETY WARNINGS

### ⚠ WARNING

#### **Read all safety warnings and all instructions.**

Failure to follow the warnings and instructions may result in electric shock, fire and/or serious injury.

#### **Save all warnings and instructions for future reference**

The term "power tool" in the warnings refers to your mains-operated (corded) power tool or battery-operated (cordless) power tool.

### **1. WORK AREA SAFETY**

**a. Keep the work area clean and well lit.** Cluttered or dark areas invite accidents.

**b. Do not operate power tools in explosive atmospheres, such as in the presence of flammable liquids, gases or dust.** Power tools create sparks which may ignite the dust or fumes.

**c. Keep children and bystanders away while operating a power tool.** Distractions can cause you to lose control.

### **2. ELECTRICAL SAFETY**

**a. Power tool plugs must match the outlet. Never modify the plug in any way. Do not use any adaptor plugs with earthed (grounded) power tools.** Unmodified plugs and matching outlets will reduce risk of electric shock.

**b. Avoid body contact with earthed or grounded surfaces, such as pipes, radiators, ranges and refrigerators.** There is an increased risk of electric shock if your body is earthed or grounded.

**c. Do not expose power tools to rain or wet conditions.** Water entering a power tool will increase the risk of electric shock.

**d. Do not abuse the cord. Never use the cord for carrying, pulling or unplugging the power tool. Keep cord away from heat, oil, sharp edges or moving parts.** Damaged or entangled cords increase the risk of electric shock.

**e. When operating a power tool outdoors, use an extension cord suitable for outdoor use.** Use of a cord suitable for outdoor use, reduces the risk of electric shock.

**f. If operating a power tool in a damp location is unavoidable, use a residual current device (RCD) protected supply.** Use of an RCD reduces the risk of electric shock.

### 3. PERSONAL SAFETY

**a. Stay alert, watch what you are doing and use common sense when operating a power tool. Do not use a power tool while you are tired or under the influence of drugs, alcohol or medication.** A moment of inattention while operating power tools may result in serious personal injury.

**b. Use personal protective equipment. Always wear eye protection.** Protective equipment such as dust mask, non-skid safety shoes, hard hat or hearing protection used for appropriate conditions will reduce personal injuries.

**c. Prevent unintentional starting. Ensure the switch is in the off-position before connecting to power source and/or battery pack, picking up or carrying the tool.** Carrying power tools with your finger on the switch or energising power tools that have the switch on invites accidents.

**d. Remove any adjusting key or wrench before turning the power tool on.** A wrench or a key left attached to a rotating part of the power tool may result in personal injury.

**e. Do not overreach. Keep proper footing and balance at all times.** This enables better control of the power tool in unexpected situations.

**f. Dress properly. Do not wear loose clothing or jewellery. Keep your hair, clothing and gloves away from moving parts.** Loose clothes, jewellery or long hair can be caught in moving parts.

**g. If devices are provided for the connection of dust extraction and collection facilities, ensure these are connected and properly used.** Use of dust collection can reduce dust-related hazards.

### 4. POWER TOOL USE AND CARE

**a. Do not force the power tool. Use the correct power tool for your application.** The correct power tool will do the job better and safer at the rate for which it was designed.

**b. Do not use the power tool if the switch does not turn it on and off.** Any power tool that cannot be controlled with the switch is dangerous and must be repaired.

**c. The plug must be removed from the socket-outlet before cleaning or maintaining the appliance.**

**d. Store idle power tools out of the reach of children and do not allow persons unfamiliar with the power tool or these instructions to operate the power tool.** Power tools are dangerous in the hands of untrained users.

**e. Maintain power tools. Check for misalignment or binding of moving parts, breakage of parts and any other condition that may affect the power tool's operation. If damaged, have the power tool repaired before use.** Many accidents are caused by poorly maintained power tools.

**f. Keep cutting tools sharp and clean.** Properly maintained cutting tools with sharp cutting edges

**G. Use the power tool, accessories and tool bits etc. in accordance with these instructions, taking into account the working conditions and the work to be performed. Use of the power tool for operations different from those intended could result in a hazardous situation.**

### 5. Service

**a. Have your power tool serviced by a qualified repair person using only identical replacement parts.** This will ensure that the safety of the power tool is maintained.

### SAFETY WARNING FOR SPOT CLEANER

- Use water under 40°C in order to remove dirt from the unit.
- Do not use it to clean arts and crafts, fibers and items not suitable for cleaning by water, and surfaces easy to be hurt (like floor, table and so on) .
- Do not slant it with water in the tank to avoid wetting floor.
- Stop the machine and empty the dirty water tank if it reaches the full line.
- Make sure the detergent used is not bad for your washed items.
- The machine may stop when cleaning long hair carpet due to blocked air outlet.
- Stop the machine if big quantity of foam or dirty water comes out and empty the dirty water tank before use it again.
- Do not use foam detergent.
- Please make sure the users needing assistant (including children) are under supervision when they use the machine.
- Do not fill the tank with flammable liquid like pesticides, hair dyes and lubricant .
- Do not use to pick up any flammable or combustible objects or cigarettes.

- Do not use to pick up any oil or hot air, or dry dust .
- Do not use it if the hose is broken, avoid bending, trampling and pulling violently of the hose.
- Do not block the air outlet to avoid influence on the heat dissipation.
- Stop use it in case of any unusual noise and smell.
- Do not disassemble, repair and change the machine's structure by yourself.
- Do not use it under the scene of heavy wind or rain.
- Do not immerse in water or liquid to avoid fire or electric shock hazard.
- Do not use to pick up any dust with infectious danger.
- Do not use without dirty water tank in position.
- If the supply cord is damaged, it must be replaced by the manufacturer, its service agent or similarly qualified persons in order to avoid a hazard.
- This appliance can be used by children aged from 8 years and above and persons with reduced physical, sensory or mental capabilities or lack of experience and knowledge if they have been given supervision or instruction concerning use of the appliance in a safe way and understand the hazards involved. Children shall not play with the appliance. Cleaning and user maintenance shall not be made by children without supervision.
- This appliance may be normally used under 50Hz or 60Hz the frequency need not to be adjusted.

## PRECAUTIONS TO SOME FAILURES

- This machine is mainly for wet using, do not use to pick up large quantity of dust.
- Dry the dirty water tank, clean water tank and the hose if the temperature is extremely low to avoid freezing.
- Take out foreign matters from the hose when blocked before use it again.

## CARPET CLEANING SOLUTION

**IMPORTANT:** Only use a **Low Foaming** carpet cleaning solution.

Always follow the instructions on the Cleaning Solution Bottle.

**DO NOT** add any other agents into the water tank such as rust removers, odour counter-reacting agents, alcohol, solvents, etc. as this will damage the appliance and may damage the carpet.

Adding other detergents or carpet cleaners that are not Low Foaming, may damage the appliance and will make using the appliance impossible due to the foaming suds. The Clean Water Tank will hold approx. 1L (1000ml) of clean water when filled to the "Max" fill line.

**Important:** Check the recommended mixing ratio found in the instructions supplied with the cleaning solution.

Add the required amount of cleaning solution to the 1 Litre of clean water in the water tank.

**DO NOT** add more cleaning solution than that specified on the cleaning solution container.

## USE THE POWER CORD AND PLUG PROPERLY

- Clean the plug from time to time.
- Plug in well when use it.
- Unplug the machine if the machine will not be used for a long time.
- Unplug the machine before maintenance, checking and moving.
- Do not plug or unplug the machine with wet hands.
- Keep the plug away from kids.
- Do not damage the power cord. Do not pull the plug violently when moving the machine.
- Do not use the machine in case of damaged power cord or plug.
- Do not use overloaded socket.
- In case of any failures, cut off the power and unplug the machine.

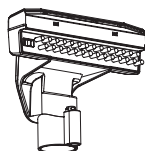
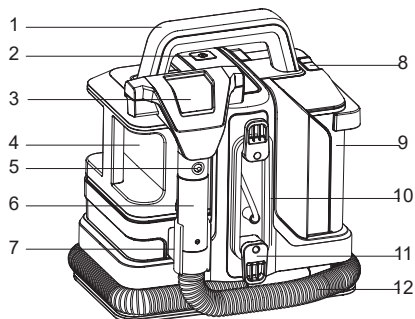
## BELOW MATTERS ARE NOT ALLOWED TO BE PICKED UP

- Dry dust
- Big quantity of powder
- Big quantity of sand and stones
- Big quantity of rubbish
- Metal matters like needles, pins
- Big polybag and stockings
- Things easy to be dumped inside

## CAUTION

- Do not use it other than cleaning.
- This machine is for household use only.
- Do not heat the appliance or put it close to fire.
- Stop working if the water sprayer is blocked.
- Stop working if any foreign matters are taken in.
- Empty the tank before using again if anything blocked inside.
- Do not slant or ride on the machine.
- Do not use it in the scope touchable for kids.
- Not for outdoor use.
- Do not continue to use when the suction hole is blocked.

## KNOW-HOW OF THE MACHINE



3



13



14

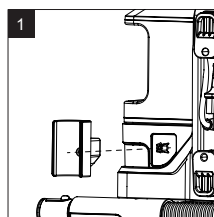
1. Handle
2. Switch
3. Big brush
4. Clean water tank
5. Released button for brush
6. Brush handle
7. Hook for brush
8. Button for dirty water tank
9. Dirty water tank
10. Power cord
11. Power cord hook
12. Hose
13. Small brush
14. Cover

## SPECIFICATIONS

Voltage/Frequency	220-240V~ 50/60Hz
Rated power	450W
Max vacuuty	≥11 kPa
Capacity of clean water tank / Dirty water tank	1080ML / 800ML
IP rating	IPX4

## SETUP & PREPARATION

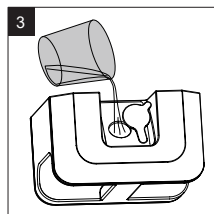
### PREPARATIONS BEFORE USE



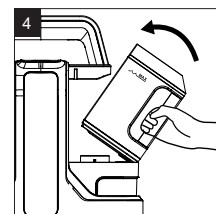
Take the hose hook from the handle, insert it into the machine and screw it tightly.



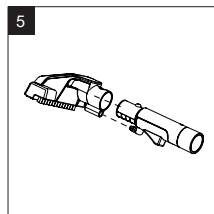
Take out the clean clean water tank.  
Notice: pull the clean water tank with an angle of 30 degree to take it out.



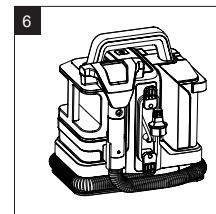
Take out the sealing pad, fill the clean water tank and seal it by the sealing pad.  
**CAUTION:** Do not use carpet shampoo as this foams and is not designed for use in this cleaner.



Put the clean water tank in.  
Notice: lock the bottom part to the machine, then put the clean water tank in.



Assemble the brush as you may want.

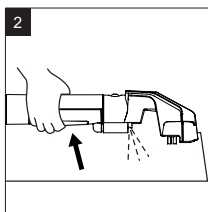


Wrap the hose around the base and insert the hook.

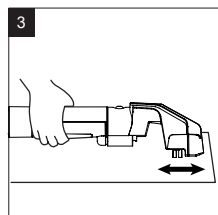
## HOW TO USE



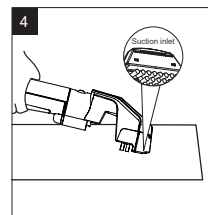
Plug the power cord and press ON/OFF button.



Press the water-spray button to spray water.



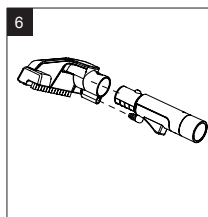
Brush the unit back and forth to clean stains.



Press the brush in the stains position to suck all dirty water.



Power it off after cleaning. Wrap the hose around the base and lock in the hook. Notice: clean the dirty water tank after every use to avoid unpleasant smell.



Please use big brush when clean big surface cleaning to save time.

## TROUBLESHOOTING

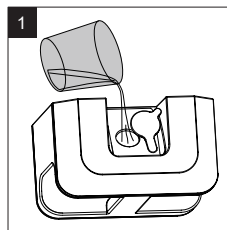
Please read below table carefully before contacting the maintenance agency to avoid any unnecessary losses.

Fault	Possible Reasons	Measures
No working after turning on	<ul style="list-style-type: none"> <li>The plug is not well plugged</li> <li>The cord is damaged</li> </ul>	Turn if off, plug in well, or consult the service agent via email
No water comes out or little water comes out after pressing the water-spray button	<ul style="list-style-type: none"> <li>Spray water mouth is blocked</li> <li>The handle or the pump has been damaged</li> </ul>	Take out the brush, wash the spray water mouth or consult the service agent via hotline.
No suction or weak suction power	<ul style="list-style-type: none"> <li>The machine is not turned on</li> <li>The dirty water tank is full</li> <li>The hose is not in good status</li> <li>The wind-in sponge is blocked</li> </ul>	Turn on the power. Clean the dirty water tank to use it again. Check the hose to make sure it is in well status. Clean or change the sponge.

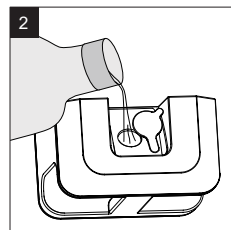
## MAINTENANCE

### HOW TO CLEAN STUBBORN STAINS

Use fabric detergent to clean stubborn stains. Mix the water and detergent with a certain proportion to fill the tank to the full line mark, and then install the clean water tank to the machine.

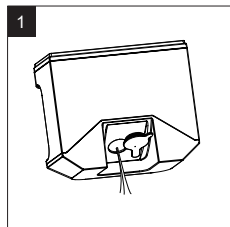


Open the water-in sealing pad, fill the clean water tank.

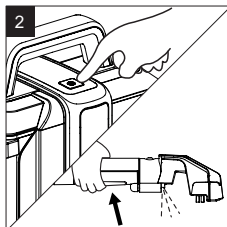


Put detergent into the tank.

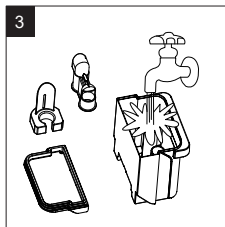
## CLEAN THE CLEAN WATER TANK



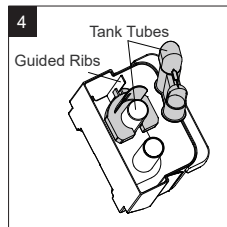
Pour water out from the tank.



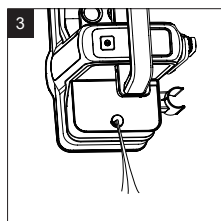
Install that empty clean water tank and press the water-spray button to spray the rest water.



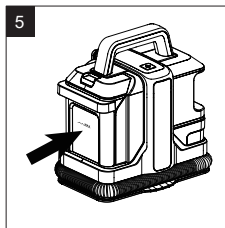
Clean all parts.



Clean the clean water tank and tubes-guiding ribs. After cleaning, insert the clean floating along the guided ribs, then insert the high part of wind guided tube into the high part of the tube inside the tank, and tighten the tank cover.



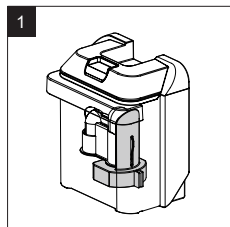
Slant the machine after plug off to dump all water.



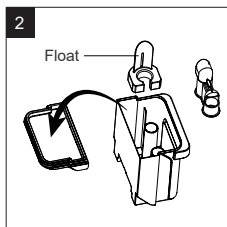
Install the dirty water tank to the machine.

## CLEAN THE DIRTY WATER TANK

Clean the dirty water tank after every use to avoid unpleasant smell.



Clean the dirty water tank before it reaches to the full line mark. The float inside will work to stop its suction if it is full of dirty water.



Take out the dirty water tank, open the tank cover, take out the wind guide tube and float.

## CARING FOR THE ENVIRONMENT



Power tools that are no longer usable should not be disposed of with household waste but in an environmentally friendly way. Please recycle it where facilities exist. Check with your local council authority for recycling advice.



Recycling packaging reduces the need for landfill and raw materials. Reuse of recycled material decreases pollution in the environment. Please recycle packaging where facilities exist. Check with your local council authority for recycling advice.

## WARRANTY

Your warranty form should be retained by you at all times. In order to make a claim under this warranty, you must return the product with your receipt of purchase. Prior to returning your product for warranty. Please contact us via our after sales support services.

**EMAIL: [support@topto.com.au](mailto:support@topto.com.au)**

### 1 YEAR REPLACEMENT WARRANTY

Your product is guaranteed for a period of 12 months from the original date of purchase and is intended for DIY (Do It Yourself) use only. If a product is defective, it will be replaced in accordance with the terms of this warranty. Warranty excludes consumable parts, for example: driver bits.

### WARNING

1. The following actions will result in the warranty being void.

Professional, Industrial or high frequency use.

2. If the tool has been operated on a supply voltage other than that specified on the tool.

3. If the tool shows signs of damage or defects caused by or resulting from abuse, accidents or alterations.

4. Failure to perform maintenance as set out within the instruction manual.

5. If the tool is disassembled or tampered with in any way.

### How to get 1 extended year warranty?

This product comes with 1 year replacement warranty. However, you may get 1 extra year warranty with conditions. Please ask for detail by sending an email to [support@topto.com.au](mailto:support@topto.com.au)

# TOPEX<sup>®</sup>

**CUSTOMER SERVICE  
& PARTS**

**Contact: [support@topto.com.au](mailto:support@topto.com.au)**