

TOPEX[®]

SKU:TXPW20V301

TX301

OWNER'S MANUAL

20V CORDLESS PRESSURE WASHER



Thank you for buying this **20V CORDLESS PRESSURE WASHER!**
Please read this manual carefully before using the product.

DESCRIPTION OF SYMBOLS



Read the user manual.



Denotes risk of personal injury, loss of life or damage to the tool in case of nonobservance of the instructions in this manual.



Risk of electric shock.



Indoor use only.



Class II machine - Double insulation - You don't need any earthed plug.



Time-lag miniature fuse-link.



Max temperature 40°C



Do not throw the battery into fire.



Do not throw the battery into water.



Before cleaning and maintenance, always switch off the machine and remove the battery pack from the machine.



DO NOT direct the water jet towards people or animals. DO NOT direct the water jet towards the unit itself, electrical parts or towards other electrical.



The machine is not intended to be connected to the potable water mains.



Protect the appliance against frost.



Separate collection for Li-ion battery.



Do not dispose of the product in unsuitable containers.



The product is in accordance with the applicable safety standards in the European directives.



GENERAL POWER TOOL SAFETY WARNINGS

⚠ WARNING

Read all safety warnings and all instructions.

Failure to follow the warnings and instructions may result in electric shock, fire and/or serious injury.

Save all warnings and instructions for future reference

The term "power tool" in the warnings refers to your mains-operated (corded) power tool or battery-operated (cordless) power tool.

1. WORK AREA SAFETY

a. Keep the work area clean and well lit. Cluttered or dark areas invite accidents.

b. Do not operate power tools in explosive atmospheres, such as in the presence of flammable liquids, gases or dust. Power tools create sparks which may ignite the dust or fumes.

c. Keep children and bystanders away while operating a power tool. Distractions can cause you to lose control.

2. ELECTRICAL SAFETY

a. Power tool plugs must match the outlet. Never modify the plug in any way. Do not use any adaptor plugs with earthed (grounded) power tools. Unmodified plugs and matching outlets will reduce risk of electric shock.

b. Avoid body contact with earthed or grounded surfaces, such as pipes, radiators, ranges and refrigerators. There is an increased risk of electric shock if your body is earthed or grounded.

c. Do not expose power tools to rain or wet conditions. Water entering a power tool will increase the risk of electric shock.

d. Do not abuse the cord. Never use the cord for carrying, pulling or unplugging the power tool. Keep cord away from heat, oil, sharp edges or moving parts. Damaged or entangled cords increase the risk of electric shock.

e. When operating a power tool outdoors, use an extension cord suitable for outdoor use. Use of a cord suitable for outdoor use, reduces the risk of electric shock.

f. If operating a power tool in a damp location is unavoidable, use a residual current device (RCD) protected supply. Use of an RCD reduces the risk of electric shock.

3. PERSONAL SAFETY

a. Stay alert, watch what you are doing and use common sense when operating a power tool. Do not use a power tool while you are tired or under the influence of drugs, alcohol or medication. A moment of inattention while operating power tools may result in serious personal injury.

b. Use personal protective equipment. Always wear eye protection. Protective equipment such as dust mask, non-skid safety shoes, hard hat or hearing protection used for appropriate conditions will reduce personal injuries.

c. Prevent unintentional starting. Ensure the switch is in the off-position before connecting to power source and/or battery pack, picking up or carrying the tool. Carrying power tools with your finger on the switch or energising power tools that have the switch on invites accidents.

d. Remove any adjusting key or wrench before turning the power tool on. A wrench or a key left attached to a rotating part of the power tool may result in personal injury.

e. Do not overreach. Keep proper footing and balance at all times. This enables better control of the power tool in unexpected situations.

f. Dress properly. Do not wear loose clothing or jewellery. Keep your hair, clothing and gloves away from moving parts. Loose clothes, jewellery or long hair can be caught in moving parts.

g. If devices are provided for the connection of dust extraction and collection facilities, ensure these are connected and properly used. Use of dust collection can reduce dust-related hazards.

4. POWER TOOL USE AND CARE

a. Do not force the power tool. Use the correct power tool for your application. The correct power tool will do the job better and safer at the rate for which it was designed.

b. Do not use the power tool if the switch does not turn it on and off. Any power tool that cannot be controlled with the switch is dangerous and must be repaired.

c. Disconnect the plug from the power source and/or the battery pack from the power tool before making any adjustments, changing accessories or storing power tools. Such preventive safety measures reduce the risk of starting the power tool accidentally.

d. Store idle power tools out of the reach of children and do not allow persons unfamiliar with the power tool or these instructions to operate the power tool. Power tools are dangerous in the hands of untrained users.

e. Maintain power tools. Check for misalignment or binding of moving parts, breakage of parts and any other condition that may affect the power tool's operation. If damaged, have the power tool repaired before use. Many accidents are caused by poorly maintained power tools.

f. Keep cutting tools sharp and clean. Properly maintained cutting tools with sharp cutting edges

G. Use the power tool, accessories and tool bits etc. in accordance with these instructions, taking into account the working conditions and the work to be performed. Use of the power tool for operations different from those intended could result in a hazardous situation.

5. Battery tool use and care

a. Recharge only with the charger specified by the manufacturer. A charger that is suitable for one type of battery pack may create a risk of fire when used with another battery pack.

b. Use power tools only with specifically designated battery packs. Use of any other battery packs may create a risk of injury and fire.

c. When battery pack is not in use, keep it away from other metal objects, like paper clips, coins, keys, nails, screws or other small metal objects, that can make a connection from one terminal to another. Shorting the battery terminals together may cause burns or a fire.

d. Under abusive conditions, liquid may be ejected from the battery; avoid contact. If contact accidentally occurs, flush with water. If liquid contacts eyes, additionally seek medical help. Liquid ejected from the battery may cause irritation or burns.

6. Service

a. Have your power tool serviced by a qualified repair person using only identical replacement parts. This will ensure that the safety of the power tool is maintained.

ELECTRICAL SAFETY



WARNING! When using mains-powered tools, basic safety precautions, including the following, should always be followed to reduce risk of fire, electric shock, personal injury and material damage.

Read the whole manual carefully and make sure you know how to switch the tool off in an emergency, before operating the tool.

Save these instructions and other documents supplied with this tool for future reference.

The charger has been designed for 230V and 240V only. Always check that the power supply corresponds to voltage on the rating plate.

Note: The supply of 230V and 240V on TOPEX tools are interchangeable for Australia.

If the supply cord is damaged, it must be replaced by an electrician or a power tool repairer in order to avoid a hazard.

Note: Double insulation does not take the place of normal safety precautions when operating this tool. The insulation system is for added protection against injury resulting from a possible electrical insulation failure within the tool.

Using an Extension Lead

Always use an approved extension lead suitable for the power input of this tool. Before use, inspect the extension lead for signs of damage, wear and ageing. Replace the extension lead if damaged or defective.

When using an extension lead on a reel, always unwind the lead completely. Use of an extension lead, not suitable for the power input of the tool or which is damaged or defective may result in a risk of fire and electric shock.

The power supply for this product's charger should be protected by a residual current device (rated at 30mA or less). A residual current device reduces the risk of electric shock.

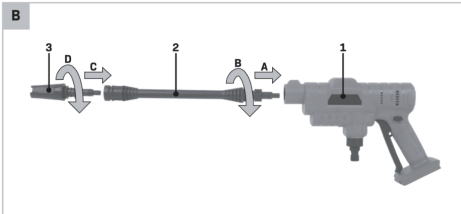
SPECIFIC SAFETY RULE

The USE and MAINTENANCE manual constitutes an essential part of the cleaner equipment and should be kept in a safe place for future reference. If you sell the cleaner, the manual should be handed on to the new owner.

- Before starting the cleaner, make sure that it is receiving water correctly. Operating the cleaner without water could damage the seals.
- Protect the cleaner from freezing during the winter.
- Do not obstruct the ventilation grilles during operation.
- Position the cleaner AS NEAR POSSIBLE to the water supply.
- The packaging is easily recyclable, and must be disposed of in compliance with the regulations in force in the country of installation.

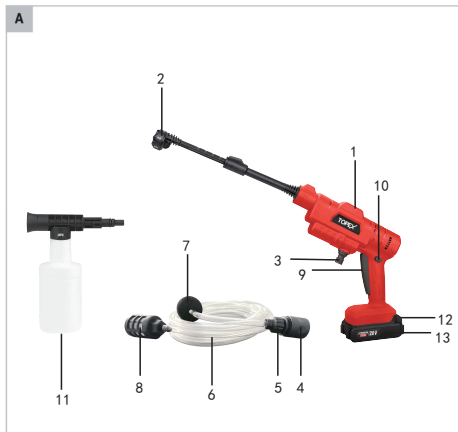
- Use the cleaner only with accessories and replacement parts authorised by the manufacturer. The use of original accessories and replacement parts will ensure safe, trouble free operation.
- Avoid unintentional firing of the trigger. Do not carry the lance/ trigger assembly with your hand over the trigger. Always use the trigger lock mechanism.
- Ensure that the safety lock on the trigger is used, when you have stopped using the pressure washer to prevent accidental operation.
- Machines shall not be used by children. Children should be supervised to ensure that they do not play with the machine. This machine is not intended for use by persons (including children) with reduced physical, sensory or mental capabilities, or lack of experience and knowledge.
- The machine is intended to be used at a temperature above 5 degree.
- The operating method to be followed in the event of accident (e.g. contact with detergents: rinse with an abundance of clean water) or breakdown to prevent unsafe situations.
- Do not use the machine within range of persons unless they wear protective clothing.
- Do not direct the jet against yourself or others in order to clean clothes or footwear.
- Risk of explosion-Do not spray flammable liquids.
- High pressure hoses, fittings and couplings are important for the safety of the machine. Use only hose, fittings and couplings recommended by the manufacturer.
- To ensure machine safety, use only original spare parts from the manufacturer or approved by the manufacturer.
- Water that has flown through backflow preventers is considered to the non-potable.
- Observe a distance of at least 30cm when using the jet to clean painted surfaces to avoid damaging paintwork.
- Do not use the device if important parts, such as the suction hose, nozzles or the spray lance are damaged.
- To ensure the machine safety, please only use original spare parts (including nozzle) from the manufacturer or approved by the manufacturer. Do not use the machine before you changed them if they are damaged.
- Be care of the danger of the kickback force on the pressure washer when starting and grasp the pressure washer with hands firmly
- To reduce the risk of injury, close supervision is necessary when a machine is used near children. Pressure cleaner shall not be used by children or untrained person.
- Know how to stop the machine and bleed pressures quickly. Be thoroughly familiar with the controls.
- Stay alert and watch what you are doing.
- Do not use for cleaning windows.
- Do not operate the machine when fatigued or under the influence of alcohol or drugs
- Keep operating area clear of all persons.

- Do not overreach or stand on unstable support. Keep good footing and balance at all times.
- Follow the maintenance instructions specified in the manual.
- When the machine is running, please maintain a constant water supply. Without water circulation will damage the sealing rings of the machine.
- Don't start and run the machine in a place excessively cold so as to prevent the machine from the freezing current.
- This machine has been designed for only using cleaning water, do not use corrosive chemicals.
- High-pressure jets can be dangerous if subject to misuse. The jet must not be directed at persons, animals, live electrical equipment or the machine itself. Pressure washers should not be pointed at tire walls, as it may be possible to damage them.
- Do not direct the jet against yourself or others in order to clean clothes or footwear.
- Disconnect the battery before carrying out user maintenance.
- Be aware of the recoil caused by the water jet when the machine is switched on.
- Do not use the pipe if the pipe is damaged. If you want connect this machine to portable water mains, you must install a backflow preventer in the water pipe to prevent dirty water flow back to the drinking water system. The backflow preventer shall comply with EN 60335-2-54.



1. Pressure washer
2. 6 IN 1 Multi-Function Nozzle
3. Water inlet
4. Hose connector
5. Hose connector ring
6. Suction hose
7. Floating ball
8. Suction filter
9. Switch lever
10. Release button
11. Detergent bottle
12. Battery unlock button
13. Battery(not include)

20V PRESSURE WASHER



SPECIFICATIONS

Max. Voltage:	20V
Max. pressure water supply:	5 bar
Max. water temperature:	40°C
Max. flow rate:	3.3 l/min
Max. pressure:	25 bar
Weight:	1.5 kg
Lpa (sound pressure):	71.9dB(A) K=3dB(A)
Lwa (sound power):	82.9dB(A) K=3dB(A)
Vibration:	1.075 m/s ² , K=1.5 m/s ²

OPERATION

Connecting the water supply



This unit is to be used with a cold-water source only!



The pressure washer must only be used with clean water; use of unfiltered water or corrosive chemicals will damage the pressure washer.



Ensure that you have a suitable water supply to feed the pressure washer. Check that all connections are tight and there are no leaks in the hose.

You can enable the water supply via a water tank (or pond, rain barrel, etc.) or via a water tap.

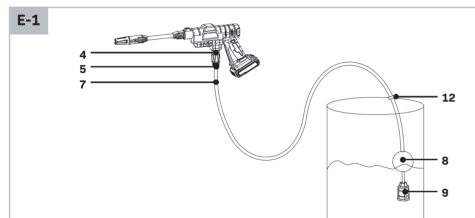
Water tank (water suction function) (Fig. E1)



Clean the suction filter (9) at regular intervals, and check it for damage. Otherwise, its function can be impaired.

When water is supplied via a water tank, pond, rain barrel, etc., the assembled suction hose (7) must be used. Only clear fresh water may be used.

1. Connect the assembled suction hose (7) to the pressure washer, place the hose connector (5) on to the water inlet (4).
2. Lower the suction filter (9) into water. Ensure there are no obstructions around the suction filter (9). Move the float ball (8) in such a way that the suction filter (9) does not touch the water bottom. The suction filter (9) must be placed at least 20 cm from the water bottom to prevent the suction of sand. When using a water tank, rain barrel or bucket, you can secure the hose by using the bucket clamp (12).
3. Check that the hose has no kinks in it.
4. The pressure washer is now ready for use.



Water tap (Fig. E2)

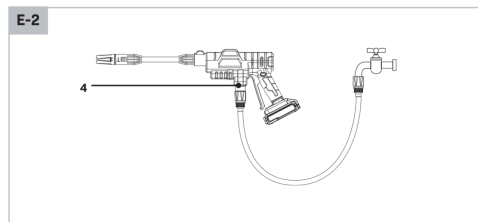


Use the device on a domestic water connection with maximum pressure of 5 bar.



The supply tap should be fully open.

1. Ensure that you have a suitable water supply to feed the pressure washer.
2. Connect the water supply hose (not included) to the water inlet (4).
3. Connect the water supply hose (not included) to the water supply.
4. Turn on water and check that the hose has no kinks in it.
5. The pressure washer is now ready for use.



Switching the pressure washer on/off (Fig. A)



The motor of this pressure washer will NOT run. It will only operate when the trigger is squeezed.

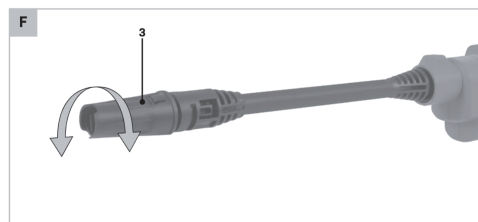


Before starting, make sure the pressure washer is connected to a water source. Dry running will damage the pressure washer!

- To start the pressure washer, press and hold the release button (11) and press the switch lever (10).
- To stop the pressure washer, release the switch lever (10).

Adjusting the nozzle (Fig. F)

Water may be sprayed out of the nozzle (3) either linearly or in a fan shape. Turn on the pressure first, and then adjust the nozzle (3).

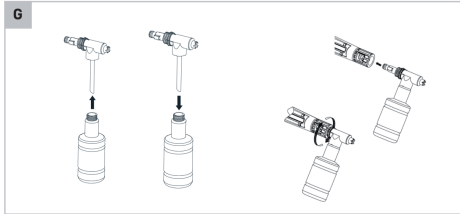


Using detergents (Fig G, A)

The detergent bottle (13) will allow you to apply many forms of liquid detergent onto the work surface.

1. Remove the detergent dispenser of the detergent reservoir and fill with liquid detergent only. Do not put any water into the reservoir. The detergent bottle (13) will mix water and detergent automatically.
2. Insert the end of the detergent bottle (13) into the pressure washer, push and turn in the clockwise direction to lock the detergent bottle (13) and pressure washer together.

When finished applying the detergent to the work surface, it is possible to spray off the detergent by using the adjustable spray nozzle (3).



Finish operation (Fig. A)

1. After use (when water is supplied via a water tank, pond, rain barrel, etc.) allow the pressure washer to run using clean water for 2 - 3 min-utes in order to remove residues and particles that may have accumulated in the machine and hose. This is not necessary when used with clean tap water.
2. To stop the pressure washer, release the switch lever (10).
3. Turn off the water supply.
4. Remove the battery from the machine.
5. Press and hold the release button (11) and press the switch lever (10) to depressurise and drain the system.
6. Disconnect the hose from the pressure washer.
7. Wipe all surfaces of the unit and accessories with a damp clean cloth.

MAINTENANCE



Before cleaning and maintenance, always switch off the machine and remove the battery pack from the machine.

Clean the machine casings regularly with a soft cloth, preferably, after each use. Make sure that the ventilation openings are free of dust and dirt. Remove very persistent dirt using a soft cloth moistened with soapsuds. Do not use any solvents such as gasoline, alcohol, ammonia, etc. Chemicals such as these will damage the synthetic components.

Suction filter

The suction filter (9) must be inspected regularly, so as to avoid blockage and restriction of the water supply to the pressure washer.

Cleaning nozzle

When the nozzle (3) is clogged, it may cause failure. The nozzle can be cleaned by inserting a small pin into the tip to remove filth.

Storage and frost protection

The pressure washer and accessories that are not completely drained can be destroyed by frost. Completely drain the pressure washer and accessories and protect them against frost.

Keep the pressure washer in well-ventilated dry premises with temperature not going below +5°C.

When not in use, keep this appliance stored in a safe place out of reach of children.

CARING FOR THE ENVIRONMENT



Power tools that are no longer usable should not be disposed of with household waste but in an environmentally friendly way. Please recycle where facilities exist. Check with your local council authority for recycling advice.



Recycling packaging reduces the need for landfill and raw materials. Reuse of recycled material decreases pollution in the environment. Please recycle packaging where facilities exist. Check with your local council authority for recycling advice.

WARRANTY

Your warranty form should be retained by you at all times. In order to make a claim under this warranty, you must return the product with your receipt of purchase. Prior to returning your product for warranty. Please contact us via our after sales support services.

EMAIL: support@topto.com.au

1 YEAR REPLACEMENT WARRANTY

Your product is guaranteed for a period of 12 months from the original date of purchase and is intended for DIY (Do It Yourself) use only. If a product is defective, it will be replaced in accordance with the terms of this warranty. Warranty excludes consumable parts, for example: driver bits.

WARNING

1. The following actions will result in the warranty being void.

Professional, Industrial or high frequency use.

2. If the tool has been operated on a supply voltage other than that specified on the tool.

3. If the tool shows signs of damage or defects caused by or resulting from abuse, accidents or alterations.

4. Failure to perform maintenance as set out within the instruction manual.

5. If the tool is disassembled or tampered with in any way.

How to get 1 extended year warranty?

This product comes with 1 year replacement warranty. However, you may get 1 extra year warranty with conditions. Please ask for detail by sending an email to support@topto.com.au

TOPEX[®]

**CUSTOMER SERVICE
& PARTS**

Contact: support@topto.com.au