

TOPEX

SKU:TXGG41P083

TX083

OWNER'S MANUAL

41PCS RIVET GUN



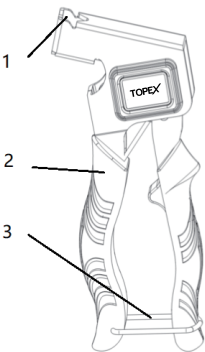
Thank you for buying this **41PCS Rivet Gun!**
Please read this manual carefully before using the product.

Technical description:

Name	41PCS Rivet Gun
Model	TX083
Weight	430g
Length	175mm (7")
Work schedule	14mm (9/16")
Metal cavity dowel specifications	M3,M4,M5,M6,M8

Product

- 1. Hollow wall anchor tool
- 2. handle
- 3. hook

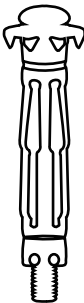


Suitable for gecko hollow nail specifications:



Metric	M3	M4	M5	M6	M8
Availability Sizes	●	●	●	●	●

Applicable profiles:air brick,wood,gypsum board and other plates, the main function is to fix the gecko hollow nail,it is can light weight object.

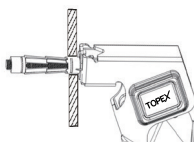
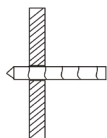
Accessories	Includes
	M4*32/ 10PCS
	M4*46/ 10PCS
	M5*37/ 5PCS
	M5*52/ 5PCS
	M5*65/ 5PCS
	M6*52/ 5PCS

Hollow wall anchor tool work steps:

Drilling a suitable hole
In you needed fixed parts.

Insert the gecko hollow nail into hole.

Close the handles to rivet, well then exit the riveter.

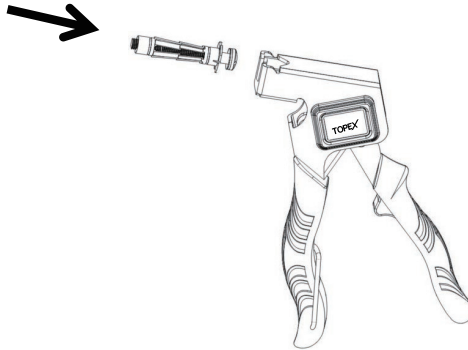


If you need drilling the hole, please refer to the size of the table below.

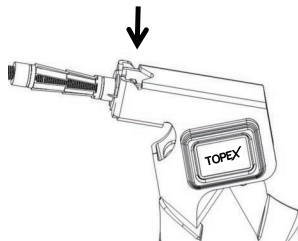
the hollow nail	M3	M4	M5	M6	M8
Drill hole size (D)	6	7	9	10	12

Operation instruction

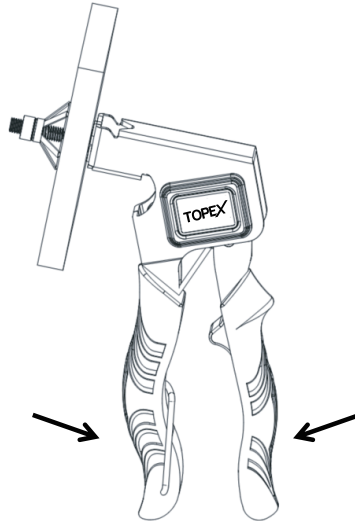
1. Prepare the hollow wall anchor and open the handle



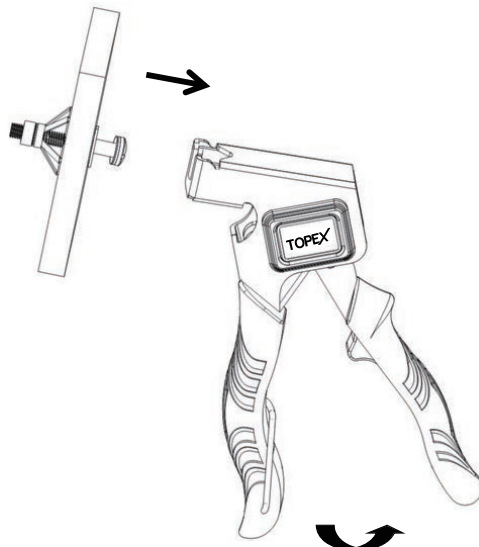
2. Screw the center gecko hollow nail of the hollow wall anchor into the head of the head u-shaped slot.



3. Place the hollow nail into the perforated member and press the handle to inflate the hollow nail into shape until it is firmly on the member.



4. Finally, open the handle and exit the nail gun.



WARRANTY

Your warranty form should be retained by you at all times. in order to make a claim under this warranty you must return the product with your receipt of purchase. prior to returning your product for warranty. please contact us via our after sales support services.

EMAIL: support@topto.com.au

Environmental protection



Recycle unwanted materials instead of disposing of them as waste. All tools, hoses and packaging should be sorted, taken to the local recycling centre and disposed of in an environmentally safe way. Dispose of used engine oil in a manner that is compatible with the environment. We suggest you take it in a sealed container to your local service station for reclamation. Do not throw it in the trash or pour it into the earth.

1 YEAR REPLACEMENT WARRANTY

Your product is guaranteed for a period of 12 months from the original date of purchase and is intended for DIY (Do It Yourself) use only. If a product is defective it will be replaced in accordance with the terms of this warranty. Warranty excludes consumable parts, for example: driver bits.

WARNING

- 1.The following actions will result in the warranty being void.
Professional, Industrial or high frequency use.
- 2.If the tool has been operated on a supply voltage other than that specified on the tool.
- 3.If the tool shows signs of damage or defects caused by or resulting from abuse, accidents or alterations.
- 4.Failure to perform maintenance as set out within the instruction manual.
- 5.If the tool is disassembled or tampered with in any way.

How to get 1 extended year warranty?

This product comes with 1year replacement warranty. However, you may get 1 extra year warranty with conditions. Please ask for detail by sending an email to **support@topto.com.au**

TOPEX

CUSTOMER SERVICE
& PARTS

Contact: support@topto.com.au