



SKU:SLAP175200

SL200

OWNER'S MANUAL



AIR PURIFIER



Thank you for buying this **Air Purifier!**
Please read this manual carefully before using the product.

WARNING

In order to prevent harm or damage happened to users or others, be sure to comply with the requirement as below:

- | | |
|--|--|
|  | Warning It reminds that misusing or mishandling may cause death. |
|  | Attention It reminds that misusing or mishandling may cause hurt. |



FORBID



FORCE

Unplug or disconnect the appliance from the power supply before servicing.

WARNING: To reduce the risk of fire or electric shock, do not use this fan with any solid-state speed control device.

WARNING: To reduce the risk of fire, electric shock or injury to persons, do not use replacement parts that have not been recommended by the manufacturer (e.g. parts made at home using a 3d printer)

WARNING

Please supervise your children and avoid them from touching or using machine.



No disassembly, repair and reconstruction.

It may cause fire or damage.

Please send it to the retailer for repair.



Do not connect or disconnect the power with wet hand

It may cause electrical shocking.



Do not use the over run socket or wiring connector. Do use the rated voltage.

It may cause fire.



Do plug the power into the socket completely.

It may cause fire because of heating or electrical shocking.

Do not use the damaged plug or loose.



The appliance must be disconnected from the supply mains before cleaning or other maintenance.

Otherwise the unit may start working in a sudden which may cause electrical shocking or hurt.



Do not repair it when the cord or plug is damaged.

It may cause short circuit, electric shocking or fire.

Please send it to the retailer for repair.



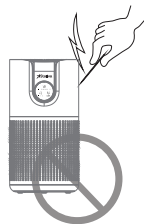
Avoid any water on the surface of the unit.

It may cause short circuit or electrical shocking.



Do not insert any metal objects into the unit.

It may cause hurt or electric shocking.



If there is dust on the plug, it may weaken the insulation, even cause fire.

Take out the plug and clean it with dry cloth. Please remove the plug from the socket if not using for a long period.



ATTENTION

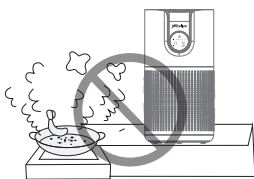
Do not power the unit on when using insecticide in the room.

Otherwise the insecticide may be stored in the unit and will blow out during the normal working time. It is harmful to the health. Please ventilate completely after having used the insecticide before turn on the unit.



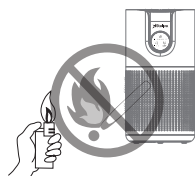
Do not use in the room with lampblack such as kitchen.

It may cause hurt because the machine is not a ventilator.



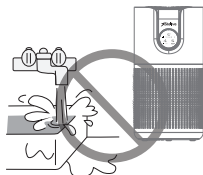
Do not blow in any combustible or fired cigarette into the unit.

It may cause fire.



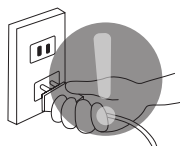
Do not use in the watery or high temperature room such as the bathroom etc.

Otherwise it may cause creepage, electric shocking or fire.



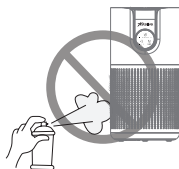
Please hold the plug instead of the cord when unplug the power.

Otherwise it may cause short circuit, breaking of the cord, electric shocking or fire.



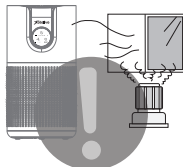
Keep away from alcohol, organic impregnant or insecticide.

It may cause cracking, short circuit, electric shocking, hurt or fire.



Please ventilate timely when used with fire in the room.

Otherwise it may cause poisoning of Co1 as the machine is not a ventilator.



Please remove the plug from the socket if any conditions as below:

- If all switches do not work
- If the power cord or plug hot singularly
- If any peculiar smell, exceptional noise or vibration
- Any other abnormality or failure

ATTENTION

If the power cord is damaged, please send it to the retailer or service center or technician for repairing. Do not change or repair it by yourself.

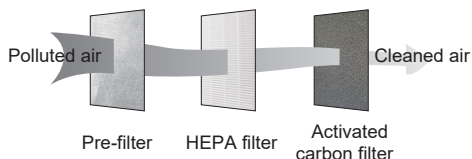
PRODUCT TECHNICAL FEATURES

PURIFICATION TECHNOLOGIES

Multi-function filter is composed of pre-filter, HEPA filter and activated carbon filter. Pre-filter can remove solid pollutants with large particle size to ensure the service life of HEPA.

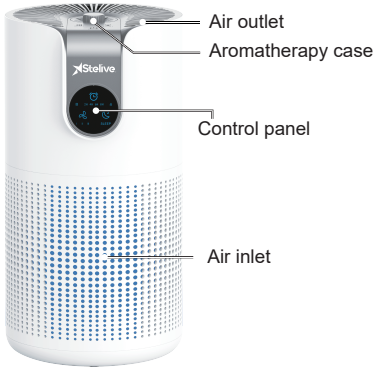
HEPA can effectively remove PM2.5 particles with a efficiency more than 99.5%. Activated carbon layer can effectively remove formaldehyde, benzene, VOC and other gaseous pollutants to maintain air cleanliness.

DIAGRAM OF PURIFICATION



PRODUCT INTRODUCTION

APPEARANCE DIAGRAM



DECOMPOSITION DIAGRAM

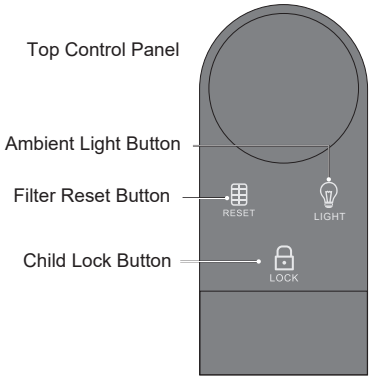


SPECIFICATIONS

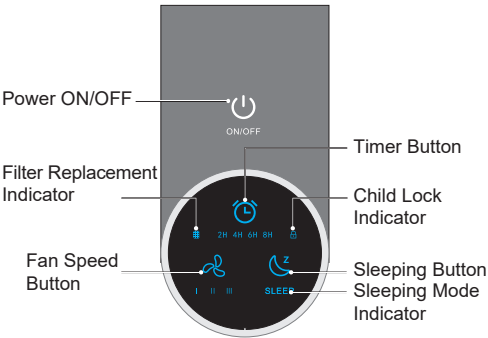
Rated Power	22W
Air flow rate	152m ³ /h
Net weight	2kg
Voltage	24V DC
Noise Level	≤56dB(A)
Area Coverage	40m ²
Dimension	18x18x36.5cm

OPERATION PARTS

Diagram of Control Panel



Front Control Panel



USE AND OPERATION

PLACEMENT

Make sure the appliance is placed at least 30cm away from any wall or piece of furniture. Do not position the air purifier directly under furniture or objects that may obstruct the exhaust air flow.
Do not use the appliance near any source of heat.

REPLACE THE FILTER

Replace the filter and reset.

The filter replacement indicator will light on when cumulative running time (1440hrs) comes to the end, please replace new filter.

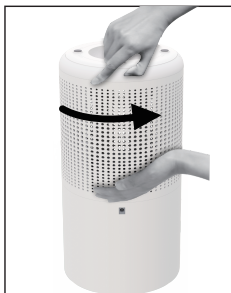
Removing the filter

1. Switch the appliance off and unplug it.
2. Invert the equipment.
3. Rotate the base cover counter-clockwise to take out the filter.
4. Remove the filter as soon as the base cover will be opened.



INSTALLING THE FILTER

1. Please remove the new filter protective film before installation.
2. Rotate the base cover clockwise properly until the filter is installed securely.



For first use, there is an adaptor in the filter, please take the adapter and protection card out.

EXTERNAL POWER SOURCE

Suitable Voltage: 24V ===



24V DC power adapter inlet



Power adapter

INSTRUCTIONS FOR USE

POWER SETTING

All the indicator light will on 1 seconds for self-checking after connecting power, then enter to standby mode.

Below pictures is for reference.

In standby status, press power button to turn on or switch off the appliance.



Self-checking status



Standby status

FAN SPEED SETTING

Press the fan speed button to select the fan speed: low, medium, high.



LOW



MEDIUM



HIGH

TIMER SETTING

Press the timer button to set the time of working.



Timing is off



Timing 2hrs



Timing 4hrs



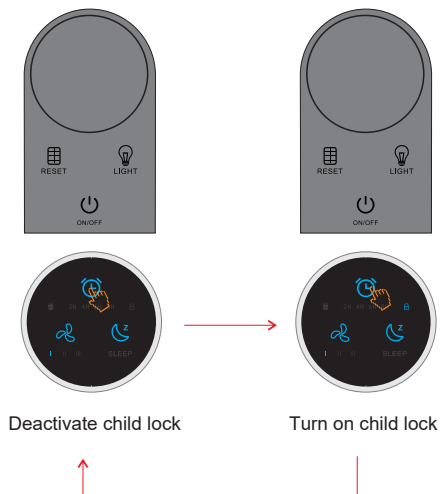
Timing 6hrs



Timing 8hrs

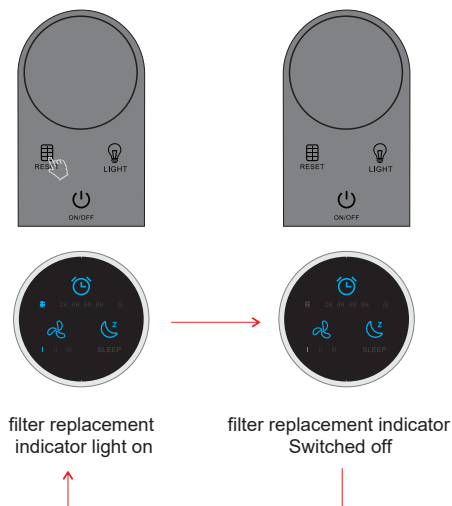
CHILD LOCK SETTING

Holding and pressing timer button about 3 seconds for turning ON/OFF Child lock function. After turn on child lock function, other's button can't be workable, and child lock indicator light is on.



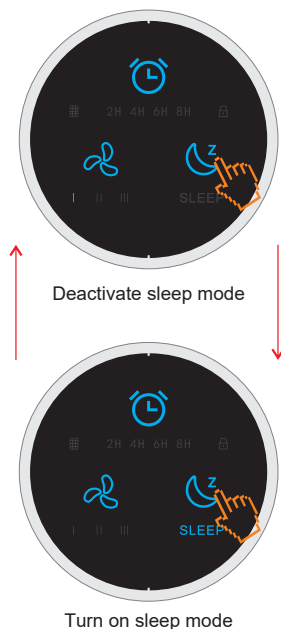
PLACING THE FILTER AND RESET

The filter replacement indicator will light on when cumulative running time (1440hrs) comes to the end, please replace new filter. Then press and hold reset button for approx. 3 seconds to reset the filter lifetime counter, with filter replacement indicator switched off.



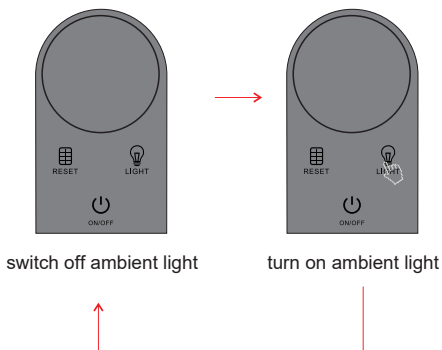
SLEEPING MODE

After enter Sleeping mode, air purifier work at lowest fan speed, sleeping mode indicator light is on, All light will off if there is no any operation after 15 seconds.



USING AMBIENT LIGHT FUNCTION

Press ambient light button to turn on or switch off the ambient light



CLEANING AND MAINTENANCE

Maintenance and cleaning methods



Please remove adaptor from the socket before cleaning and maintenance.



- Cleaning the body for this device by damp cloth, then wipe it dry.
- If the machine is too dirty, neutral detergent can be used for cleaning, but please dilute the detergent before use.
- Do not clean the unit with the solvent listed on the right which may cause distortion or discolour.

If the machine can't work properly, please kindly check as below before you send it out for repair.

Problem	Checking methods	Possible solution
Do not work	Please check if the plug of power adapter is disconnected from the socket?	The plug of power adapter should be plugged properly.
Odor can not be removed	Is there a very strong odor in the using environment? (Notes: air should be purified continuously)	It is recommended to ventilate the room before turning on the machine
	Does the using life time for filters come to the end?	Please replace new filter
High noise	Is the PE bag for filter removed?	Please take out filter and tear off PE bag.
	Does the using life time for filters come to the end?	Please replace new filter

If the problem is still existed after above inspections, please disconnect the power and it for repair.

CARING FOR THE ENVIRONMENT



Power tools that are no longer usable should not be disposed of with household waste but in an environmentally friendly way. Please recycle where facilities exist. Check with your local council authority for recycling advice.



Recycling packaging reduces the need for landfill and raw materials. Reuse of recycled material decreases pollution in the environment. Please recycle packaging where facilities exist. Check with your local council authority for recycling advice.

WARRANTY

Your warranty form should be retained by you at all times. In order to make a claim under this warranty, you must return the product with your receipt of purchase. Prior to returning your product for warranty. Please contact us via our after sales support services.

EMAIL: support@topto.com.au

1 YEAR REPLACEMENT WARRANTY

Your product is guaranteed for a period of 12 months from the original date of purchase and is intended for DIY (Do It Yourself) use only. If a product is defective, it will be replaced in accordance with the terms of this warranty. Warranty excludes consumable parts, for example: driver bits.

WARNING

1. The following actions will result in the warranty being void.
Professional, Industrial or high frequency use.
2. If the tool has been operated on a supply voltage other than that specified on the tool.
3. If the tool shows signs of damage or defects caused by or resulting from abuse, accidents or alterations.
4. Failure to perform maintenance as set out within the instruction manual.
5. If the tool is disassembled or tampered with in any way.

How to get 1 extended year warranty?

This product comes with 1 year replacement warranty. However, you may get 1 extra year warranty with conditions. Please ask for detail by sending an email to support@topto.com.au