



SKU:SLSB6PC120

SL120

OWNER'S MANUAL

6 PACK SHOE DISPLAY BOX



Thank you for buying this **6 Pack Shoe Display Box!**
Please read this manual carefully before using the product.



GENERAL GUIDELINES

Please read the following tips carefully and use the product correctly.
If you buy the product for others, please keep these tips and send them to the receiver.
In order for you to have a clear and summary preview, we have not described all possible scenarios and installation details that may be involved. If you need more information and help, please contact us.

Notes

Please check if all the parts are complete and in good condition according to the instructions before installation. If not, please do not set it up, but contact us as soon as possible.
Please keep children away during installation to avoid accidental swallowing of tiny accessories.
Please install and use the product on a solid and flat floor to avoid the risk of safety accidents caused by tipping over.
Please do not fix the plastic connectors extra tight, or the parts might be damaged.
Please check and make sure all the parts are installed well after installation finished.
Kids are not allowed to climb on or hang on the product, in case of a life-threatening toppling.
Please do not lean or stay on the product.
Please check regularly if the plastic connectors get loose, if yes, please fix them well again to make sure the stability of the product.
Please do not put items overweight, or there might be a risk of serious personal injury or damage to personal belongings due to rollover.
Be sure to unload the items on the shelf before moving.
Wipe with a dry cloth or a damp cloth.
Please do not expose the product to strong sunlight, and keep away from sharp objects to avoid damage.

Warnings

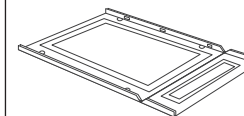
Please do not use the product before finishing the installation.
Do not modify this product or use alternative accessories.
This product shall not be used for any purpose other than function of the product.

Customer Service

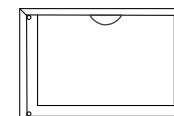
If any questions, please contact our customer service team through the corresponding purchase platform.

PART LIST

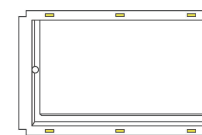
①×12pcs



②×6pcs



③×12pcs

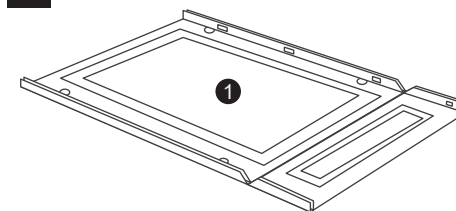


A×36pcs

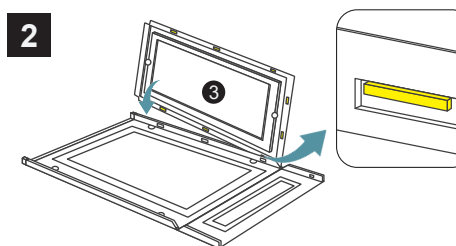


INSTALLATION STEPS

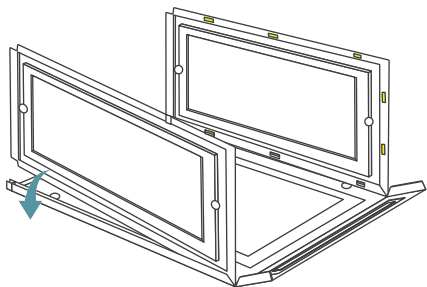
1



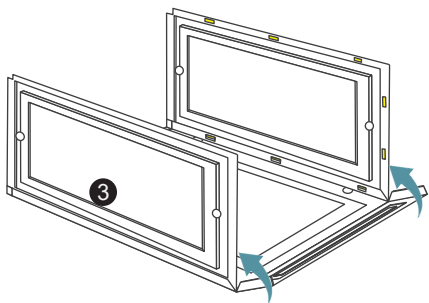
2



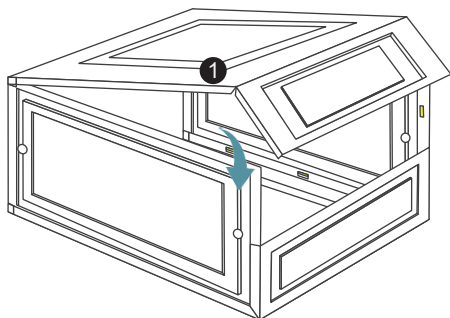
3



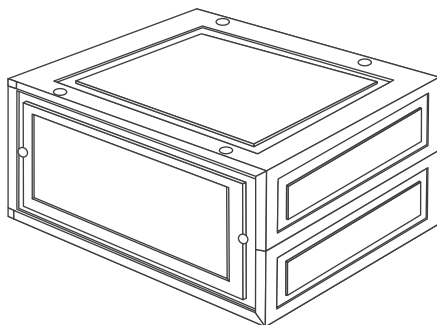
4



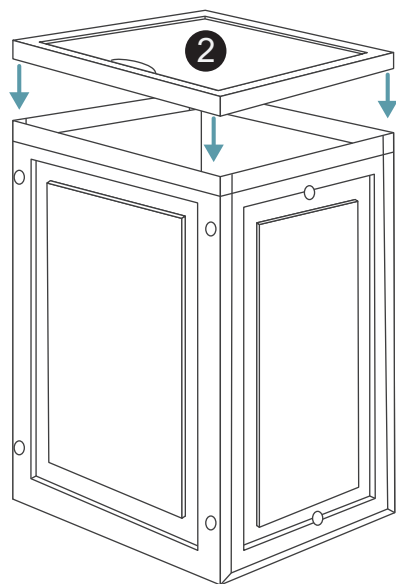
5



6

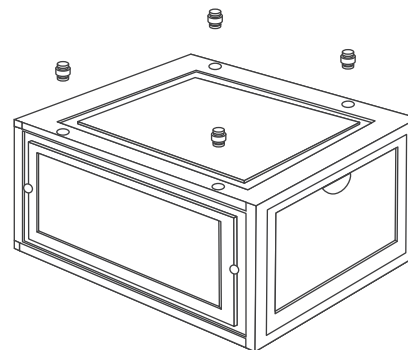
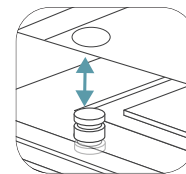


7

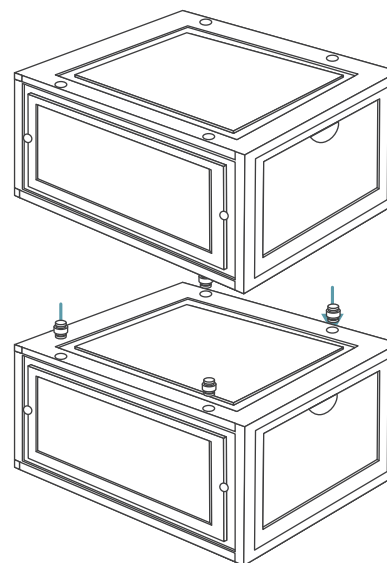


8

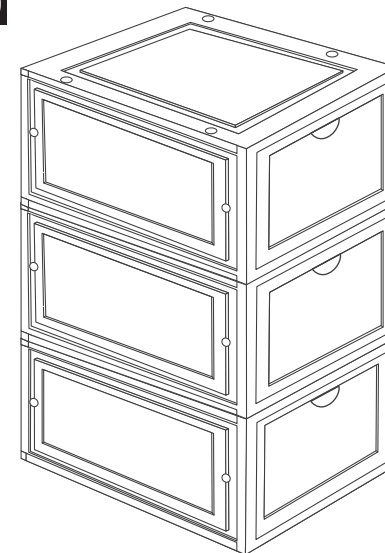
A  x4



9



10



Align the points and press to stack the shoe boxes.