

64 PIECE TYRE REPAIR KIT



MS081

*Operation and
maintenance
instruction manual*

Important: It is essential that you read the instructions in this manual before operating this machine.

PACKING INCLUDE



1X LONG-NOSE PLIER



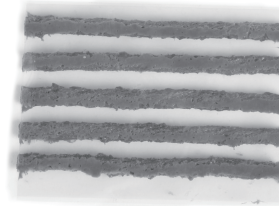
1X TYRE
PRESSURE GAUGE



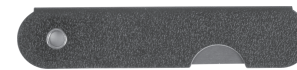
1X INSERTION
NEEDLE REPLACEMENT



1X T-HANDLE SPIRAL
PROBE REAMER



30X TYRE PLUGS



1X KNIFE



1X VALVE STEM REPAIR TOOL



2X HEX WRENCHRS



1X GLOVES



4X VALVE STEMS



4X PLASTIC
VALVE CAPS



1X LUBRICANT



4X VALVE CORES



1X T-HANDLE INSERTION TOOL







⚠ WARNING



Read all safety warnings and all instructions.

1. BUILT WITH THE BEST MATERIAL

Your tyre repair kit needs to be able to withstand the toughest repairs, stored conditions and rough treatment. The Heavy Duty 64 Piece Tyre Repair Kit from MasterSpec is engineered to be durable and built to last. Unlike cheaper competitors, we don't cut corners when it comes to quality. We combine the best materials available with the strongest engineering designs to ensure quality and longevity.

2. 8 EASY STEPS AND YOU AND YOUR FAMILY ARE ON THEIR WAY AGAIN

- ①**  Remove off ending object from tyre with included heavy duty plier.
- ②**  Use spiral reaming tool to enlarge puncture.
- ③**  Apply included lubricant to ease threading of cord and insertion into puncture area.
- ④**  Use the pliers to remove a repair cord out the side of the plastic.
- ⑤**  Thread repair cord into eye of insertion tool.
- ⑥**  Use insertion tool to insert cord into puncture, leaving 1/2 inch of cord ends visible.

- ⑦**  Hold the retaining platform against the tyre while quickly and firmly pulling the T-Handle up leaving the plug in place.
- ⑧**  Use the included Knife to trim excess plug material and re-Inflate tyre to recommended pressure.

MasterSpec

CUSTOMER SERVICE
&PARTS

Contact:support@topito.com.au