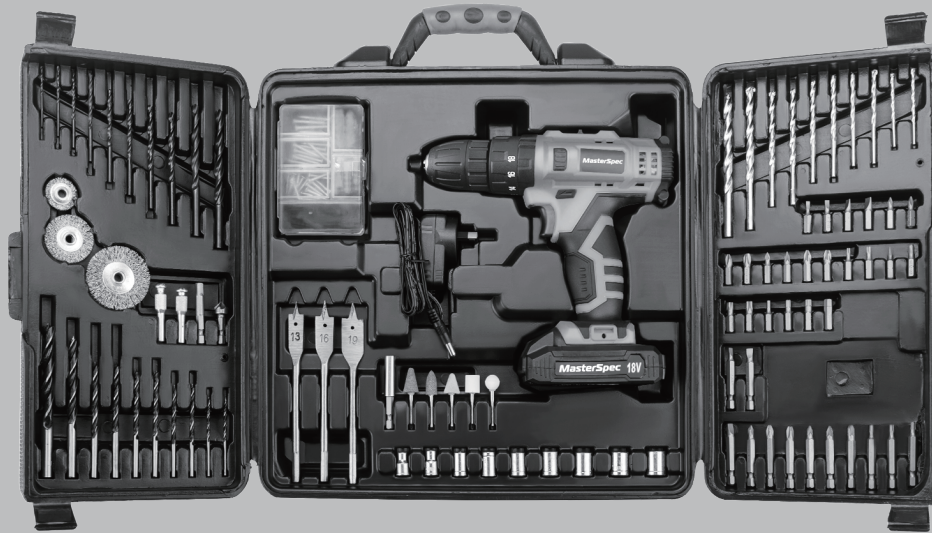


MasterSpec

92 PIECE HAMMER DRILL SET



MS002 *Operation and maintenance instruction manual*

Important: It is essential that you read the instructions in this manual before operating this machine.

PACKING INCLUDE



1 x Cordless drill



1 x Carry box



1 x Charger



5 x Grinding stones



3 x Wire brush



9 x Sockets



3 x Flat wood boring bits
(13,16,19mm)



1 x Socket adaptor
1 x Bit extension
2 x Brush shafts
1 x Countersink bore bit



12 x 50mm bits



22 x 25mm bits



10 x Twist drills
(2-2.5-3-3.5-4-4.5-5-6-7-8mm)



10 x Wood drills
(3-3.4-4-5-5.6-6-8-10mm)



10 x Masonry drills
(3-3.4-4-5-5.6-6-8-10mm)

GENERAL POWER TOOL SAFETY WARNINGS

▲ WARNING

Read all safety warnings and all instructions. Failure to follow the warnings and instructions may result in electric shock, fire and/or serious injury.

Save all warnings and instructions for future reference

The term "power tool" in the warnings refers to your mains-operated (corded) power tool or battery-operated (cordless) power tool.

1. WORK AREA SAFETY

- a. **Keep work area clean and well lit.** Cluttered or dark areas invite accidents.
- b. **Do not operate power tools in explosive atmospheres, such as in the presence of flammable liquids, gases or dust.** Power tools create sparks which may ignite the dust or fumes.
- c. **Keep children and bystanders away while operating a power tool.** Distractions can cause you to lose control.

2. ELECTRICAL SAFETY

- a. **Power tool plugs must match the outlet. Never modify the plug in any way. Do not use any adapter plugs with earthed (grounded) power tools.** Unmodified plugs and matching outlets will reduce risk of electric shock.
- b. **Avoid body contact with earthed or grounded surfaces, such as pipes, radiators, ranges and refrigerators.** There is an increased risk of electric shock if your body is earthed or grounded.
- c. **Do not expose power tools to rain or wet conditions.** Water entering a power tool will increase the risk of electric shock.
- d. **Do not abuse the cord. Never use the cord for carrying, pulling or unplugging the power tool. Keep cord away from heat, oil, sharp edges or moving parts.** Damaged or entangled cords increase the risk of electric shock.
- e. **When operating a power tool outdoors, use an extension cord suitable for outdoor use.** Use of a cord suitable for outdoor use reduces the risk of electric shock.
- f. **If operating a power tool in a damp location is unavoidable, use a residual current device (RCD) protected supply.** Use of an RCD reduces the risk of electric shock.

3. PERSONAL SAFETY

- a. **Stay alert, watch what you are doing and use common sense when operating a power tool. Do not use a power tool while you are tired or under the influence of drugs, alcohol or medication.**

A moment of inattention while operating power tools may result in serious personal injury.

- b. **Use personal protective equipment. Always wear eye protection.** Protective equipment such as dust mask, non-skid safety shoes, hard hat or hearing protection used for appropriate conditions will reduce personal injuries.
 - c. **Prevent unintentional starting. Ensure the switch is in the off-position before connecting to power source and/or battery pack, picking up or carrying the tool.** Carrying power tools with your finger on the switch or energising power tools that have the switch on invites accidents.
 - d. **Remove any adjusting key or wrench before turning the power tool on.** A wrench or a key left attached to a rotating part of the power tool may result in personal injury.
 - e. **Do not overreach. Keep proper footing and balance at all times.** This enables better control of the power tool in unexpected situations.
 - f. **Dress properly. Do not wear loose clothing or jewellery. Keep your hair, clothing and gloves away from moving parts.** Loose clothes, jewellery or long hair can be caught in moving parts.
 - g. **If devices are provided for the connection of dust extraction and collection facilities, ensure these are connected and properly used.** Use of dust collection can reduce dust-related hazards.
- Drill safety Warnings**
- **Wear ear protectors when impact drilling.**
Exposure to noise can cause hearing loss.

4. POWER TOOL USE AND CARE

- a. **Do not force the power tool. Use the correct power tool for your application.** The correct power tool will do the job better and safer at the rate for which it was designed.
- b. **Do not use the power tool if the switch does not turn it on and off.** Any power tool that cannot be controlled with the switch is dangerous and must be repaired.
- c. **Disconnect the plug from the power source and/or the battery pack from the power tool before making any adjustments, changing accessories or storing power tools.** Such preventive safety measures reduce the risk of starting the power tool accidentally.
- d. **Store idle power tools out of the reach of children and do not allow persons unfamiliar with the power tool or these instructions to operate the power tool.** Power tools are dangerous in the hands of untrained users.

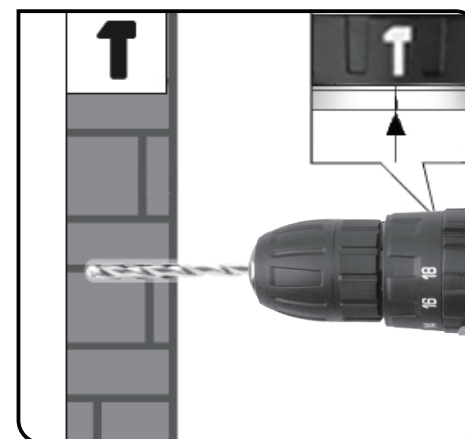
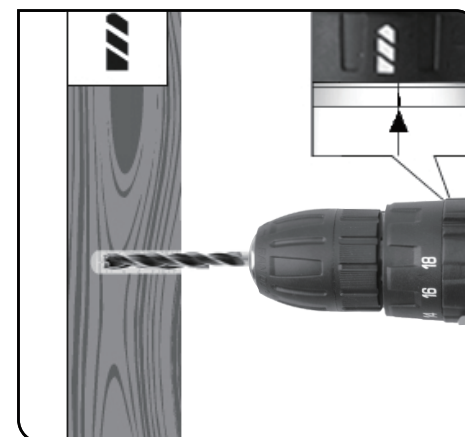
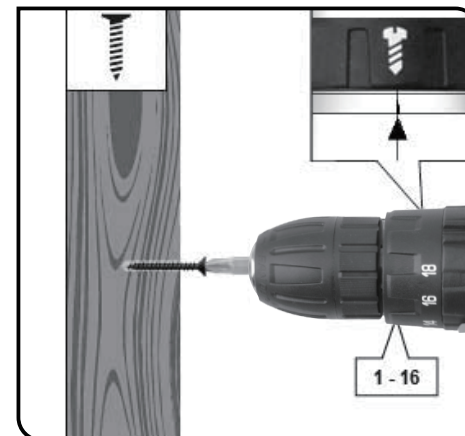
- e. **Maintain power tools. Check for misalignment or binding of moving parts, breakage of parts and any other condition that may affect the power tool's operation. If damaged, have the power tool repaired before use.** Many accidents are caused by poorly maintained power tools.
- f. **Keep cutting tools sharp and clean.** Properly maintained cutting tools with sharp cutting edges
- g. **Use the power tool, accessories and tool bits etc. in accordance with these instructions, taking into account the working conditions and the work to be performed. Use of the power tool for operations different from those intended could result in a hazardous situation.**

5. Battery tool use and care

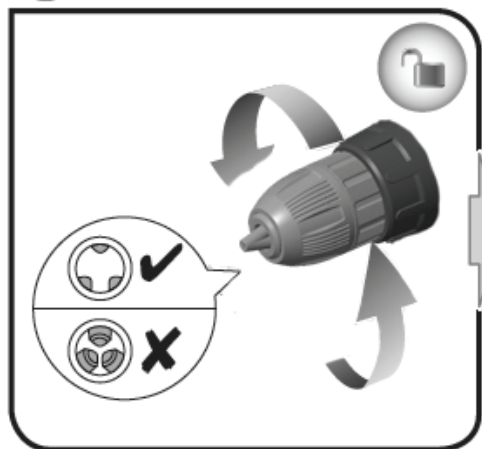
- a. **Recharge only with the charger specified by the manufacturer.**
A charger that is suitable for one type of battery pack may create a risk of fire when used with another battery pack.
- b. **Use power tools only with specifically designated battery packs.**
Use of any other battery packs may create a risk of injury and fire.
- c. **When battery pack is not in use, keep it away from other metal objects, like paper clips, coins, keys, nails, screws or other small metal objects, that can make a connection from one terminal to another.** Shorting the battery terminals together may cause burns or a fire.
- d. **Under abusive conditions, liquid may be ejected from the battery; avoid contact. If contact accidentally occurs, flush with water. If liquid contacts eyes, additionally seek medical help.** Liquid ejected from the battery may cause irritation or burns.

6. Service

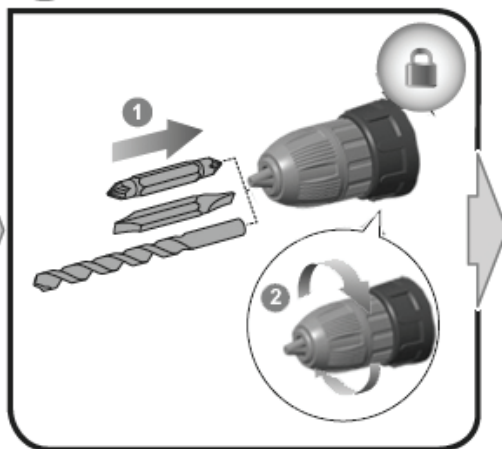
- a. **Have your power tool serviced by a qualified repair person using only identical replacement parts.** This will ensure that the safety of the power tool is maintained.



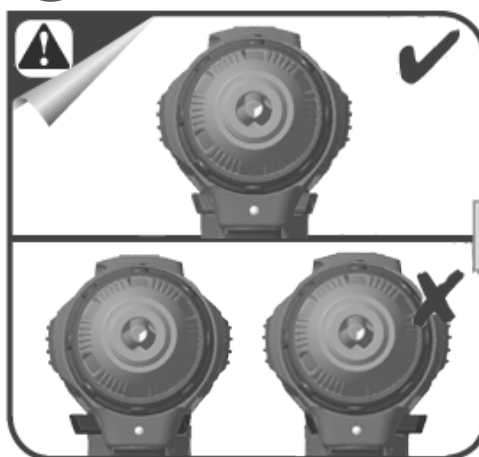
1



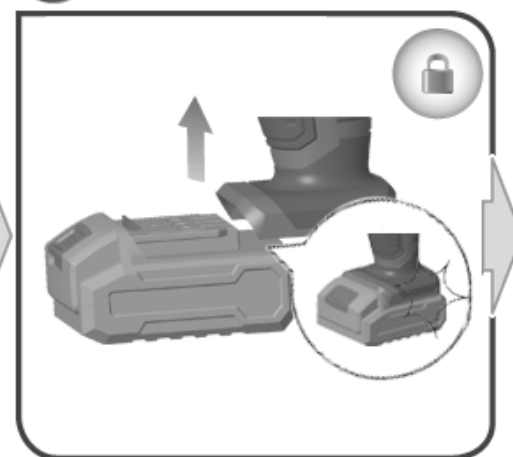
2



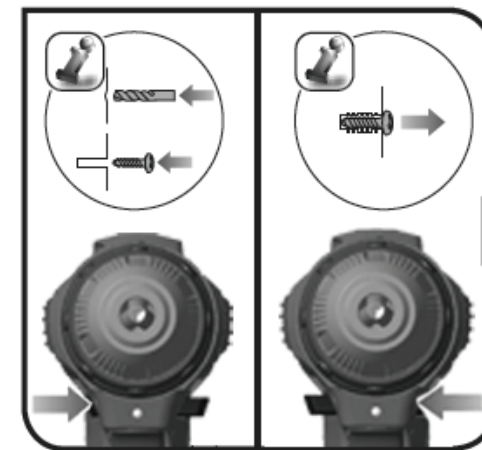
5



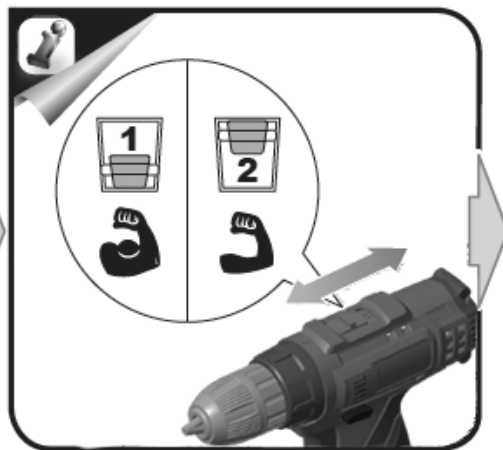
6



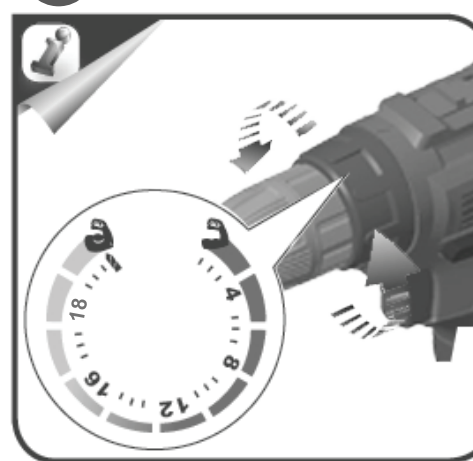
3



4



7



8



SPECIFICATIONS

Torque (N.m)	30
Max Voltage (v =)	18
Battery type	Lithium-ion
No-load speed (rpm)	0-350/0-1350
Max Chuck Size (mm)	10
Drill Weight(kg)	1.2
Charger input (V)	100-240V
Frequency (Hz)	50-60
Allowable temperature (C)	0-50
Charge time (h)	3-5

CHARGING

Before using the driver drill, charge the battery as follows.

1. Charging the battery by inserting the plug into battery. Connect the charger to a suitable mains socket. The red charging light comes on. The charger may become warm and buzz slightly during charging. This is normal and does not indicate a fault.
2. When the battery fully charged. the green light will light up and the red light will go out.
3. After charging unplug the charger from the wall outlet.

Note



- The operation time of a new battery. will ramp up as it is properly used and recharged batteries.
- When you charge a battery cartridge which is new or has not been used for a long period of time, it may not accept a full charge until after discharging it completely and recharging a couple of times.
- If you charge a battery from a just operated tool or a battery which has been exposed to direct sunlight or heat for a long time, the charging light may lighten in red color. If this occurs, wait for a while. Charging will begin after the battery cool down.

GENERAL SAFETY RULES

(FOR ALL BATTERY OPERATED TOOLS)

WARNING

Read and understand all instructions. Failure to follow all instructions listed below, may result in electric shock, fire or serious personal injury.

WORK AREA

- Keep your work area clean and well lit. Cluttered benches and dark areas can cause accidents.
- Do not operate power tools in exposed atmospheres, such as in the presence of flammable liquids, gasses, or dust.
- Power tools create sparks which may ignite the dust. Keep bystanders, children, and visitors away while operating power tools. Distractions can cause you to lose control.

MAINTENANCE

CAUTION

- Always be sure the tool is switched off and the battery cartridge is removed before attempting inspection or maintenance
- To maintain product SAFETY and RELIABILITY repairs or any other maintenance or adjustment should be performed by professional Service Centers, always using our recommended replacement parts.

WARRANTY

Your warranty form should be retained by you at all times. in order to make a claim under this warranty you must return the product with your receipt of purchase. prior to returning your product for warranty. please contact us via our after sales support services.
EMAIL: support@topto.com.au

Environmental protection



Recycle unwanted materials instead of disposing of them as waste. All tools, hoses and packaging should be sorted, taken to the local recycling centre and disposed of in an environmentally safe way. Dispose of used engine oil in a manner that is compatible with the environment. We suggest you take it in a sealed container to your local service station for reclamation. Do not throw it in the trash or pour it into the earth.

1 YEAR REPLACEMENT WARRANTY

Your product is guaranteed for a period of 12 months from the original date of purchase and is intended for DIY (Do It Your self) use only. If a product is defective it will be replaced in accordance with the terms of this warranty. Warranty excludes consumable parts, for example: driver bits.

WARNING

1. The following actions will result in the warranty being void.
2. Professional, Industrial or high frequency use.
3. If the tool has been operated on a supply voltage other than that specified on the tool.
4. If the tool shows signs of damage or defects caused by or resulting from abuse, accidents or alterations.
5. Failure to perform maintenance as set out within the instruction manual.
6. If the tool is disassembled or tampered with in any way.

1 year extended warranty

This product comes with 1 year replacement warranty. However, you may get 1 extra year warranty with conditions. Please ask for detail by sending an email to **support@topto.com.au**

MasterSpec

CUSTOMER SERVICE
& PARTS

Contact: support@topto.com.au