

Monika

OWNER'S MANUAL

6 IN 1 LADY SHAVER



MK091

PACKAGE INCLUDED



SECURITY INSTRUCTIONS

NOTE: It is common for new electrical appliances to give off light smoke or fumes during the first few times they are used. This happens due to heating of the materials and components used in the manufacture of the device. It is normal and does not indicate the existence of defects in the device.

- Do not use the product when it has any damage to the adapter or other components. To replace any damaged part, contact Technical Assistance Authorised in order to avoid risks.
- Use the device exclusively for the purposes described in this manual.
- Only use the device with the adapter supplied with the device. If there are any doubts as to the adapter contact the Authorised Technical Assistance.
- Do not wrap the electrical cord of the adapter around the body of the device.
- Always remove the adapter from the electrical outlet when the device is not being used.
- This appliance is not intended for use by persons (including children) with reduced physical, sensory or mental capabilities, or lack of experience and knowledge, unless they are supervised or instructed by a person responsible for their security.
- Children must be supervised to ensure that they do not play with the device.
- To avoid the risk of fire, burns or shock, never leave the device unattended due care if connected to the socket.
- Never use the trimmer in the bathtub.
- Do not use the device if the user has varicose veins, spots or if the skin is irritated. Consult a doctor before using the device in these cases.
- If the user uses a pacemaker, he should consult the doctor before using the device.
- Using the device may cause skin redness or irritation. This is a reaction normal that will disappear with time. If these signs persist for more than 3 days, the user should consult a dermatologist.
- Do not immerse the device in water.
- Do not store the device near heat sources or in environments subject to humidity or exposed to direct sunlight.
- Regular massage of the skin with gloves or pads will prevent the formation of hairs ingrown.
- To avoid voiding the warranty and to avoid technical problems, do not repair the device in House. When needed, the user must take it to the Authorised Technical Assistance.
- The invoice and warranty certificate are important documents and must be kept for warranty purposes.
- Do not use the appliance plugged in under a shower or bath.

6 IN 1 LADY SHAVER

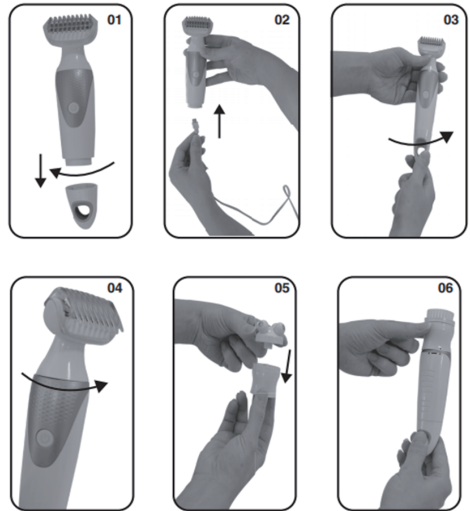


1. Tail stock
2. Trimmer body
3. Trimmer head
4. Trimmer head comb: Size 8.5 mm
5. Eyebrow shaving comb:
The short side is 3 mm and the long side is 4 mm.
6. Eyebrow trimmer
7. Massage head
8. Facial cleaning brush
9. Nose hair trimmer
10. Base
11. Silicone facial cleaning head

SPECIFICATIONS

Battery: Li-ion 14430 1*3.7V 500mAh
 USB charging: 5V 1000mA
 Charge: 1.5h, flash lighting will appear when charging, normal lighting when fully charged
 Running: 45 min
 Product size: 172x50x35mm
 Waterproof level: IPX6 washable, can be washed directly underwater
 Accessories: nose hair trimmer, eyebrow trimmer, massage head, face brush, cleaning brush

SETUP & PREPARATION



1. Rotate and unscrew the tail stock, connect cable terminal and tail entry, then join up USB, flash lighting will appear when charging, turn normal lighting when fully charged. (Figure 2)
2. How to remove the head: the fuselage is to the left, the head part is to the right, turn around 45 degrees to remove the head, as shown in Figure 2. (Figure 2).
3. How to install the required head: Align the part with the scale mark on the back, insert it into the main unit, and rotate it to fix it.
4. Press the switch button to turn it on.

Note: The face brush head and the message head are interchangeable (Fig. 3). When installing this head, it is recommended that the machine switch should be turned on. When the power is turned on, align the back arrow mark into the main unit (Fig. 4) and finally rotate and fix it (Fig. 5). After the installation, the scale mark on the back is aligned (Figure 6).

ACCESSORIES

MASSAGE HEAD

Accessory for a relaxing massage on the face. It is recommended to use with a moisturising cream, because this way it will glide better on the face.



SILICONE FACIAL CLEANING HEAD

It's easy to place and doesn't take up much space. It can effectively clean the nose, T area and other facial areas. The cleaning effect is more thorough than hand washing. Soft silicone contacts can play a massage role.



EXFOLIANT BRUSH

Ideal for exfoliating the face. It is indicated use together with an exfoliating cream.



NOSE AND EAR HAIR TRIMMER

Accessory to remove hair from the nose and ear.



EYEBROW TRIMMER

Ideal accessory for trimming eyebrow hair, fluff and body hair. Can be used with or without the comb.



TRIMMER HEAD ACCESSORY WITH TRIMMER COMB

The blade is made of stainless steel and the size of the cut it makes is 0.3 mm, after attaching the trimming comb the cutting size is 8.5 mm. Ideal for removing underarm hair, leg hair, provides quick and pain-free hair removal.



PRODUCT FITTING SUPPORT

Accessory to support the product so that it stands up, facilitates the storage and exchange of accessories.



CLEANING AND STORAGE

- Before any cleaning, switch off the device by pressing the button.

- The product must not be connected to the charger. Cleaning the hair clippers.

1. With the product properly turned off, detach the accessory from the body of the device.
2. Afterwards, use the cleaning brush to remove the hairs contained on the heads of the sideboards.

- The appliance's trimmers and combs separate from the appliance can be washed in water current and ambient temperature. Dry well before storing them.
- Never wet the adapter under the risk of electric shock.
- Never use corrosive liquids, creams and oils to clean this device.
- Clean the device after each use.
- To clean the body of the device, use a cloth moistened with water. Never submerge the body of the device and the charger in water or other liquids.

PROBLEM CAUSES AND SOLUTIONS

PROBLEM	CAUSE	SOLUTION
Noisy cutting accessories	Cutting accessories are not properly fitted	Check that the accessory is correctly fitted, as mentioned in the instructions for Manual. Try to remove and reset the cutting accessory.
Poor cutting performance.	Battery low.	Charge the device by plugging it into the adapter that comes with the product, as instructed in the Manual.
	Cutting attachments jammed due to excessive hair in the tweezers.	Turn off the appliance, remove the accessory and clean it using the cleaning brush that comes with the product.
	Too much pressure from the device under the skin.	Only use the device touching the skin. No excess pressure is necessary.

CARING FOR THE ENVIRONMENT



Power tools that are no longer usable should not be disposed of with household waste but in an environmentally friendly way. Please recycle where facilities exist. Check with your local council authority for recycling advice.



Recycling packaging reduces the need for landfill and raw materials. Reuse of recycled material decreases pollution in the environment. Please recycle packaging where facilities exist. Check with your local council authority for recycling advice.

WARRANTY

Your warranty form should be retained by you at all times. In order to make a claim under this warranty you must return the product with your receipt of purchase. Prior to returning your product for warranty, please contact us via our after-sales support services.

EMAIL: support@topto.com.au

1 YEAR REPLACEMENT WARRANTY

Your product is guaranteed for a period of 12 months from the original date of purchase and is intended for DIY (Do It Yourself) use only. If a product is defective it will be replaced in accordance with the terms of this warranty. Warranty excludes consumable parts, for example: driver bits.

WARNING

1. The following actions will result in the warranty being void.

Professional, Industrial or high frequency use.

2. If the tool has been operated on a supply voltage other than that specified on the tool.

3. If the tool shows signs of damage or defects caused by or resulting from abuse, accidents or alterations.

4. Failure to perform maintenance as set out within the instruction manual.

5. If the tool is disassembled or tampered with in any way.

How to get 1 extended year warranty?

This product comes with 1 year replacement warranty. However, you may get 1 extra year warranty with conditions. Please ask for detail by sending an email to **support@topto.com.au**

Monika

6 In 1 Lady Shaver

Monika®

CUSTOMER SERVICE
&PARTS

Contact: support@topto.com.au