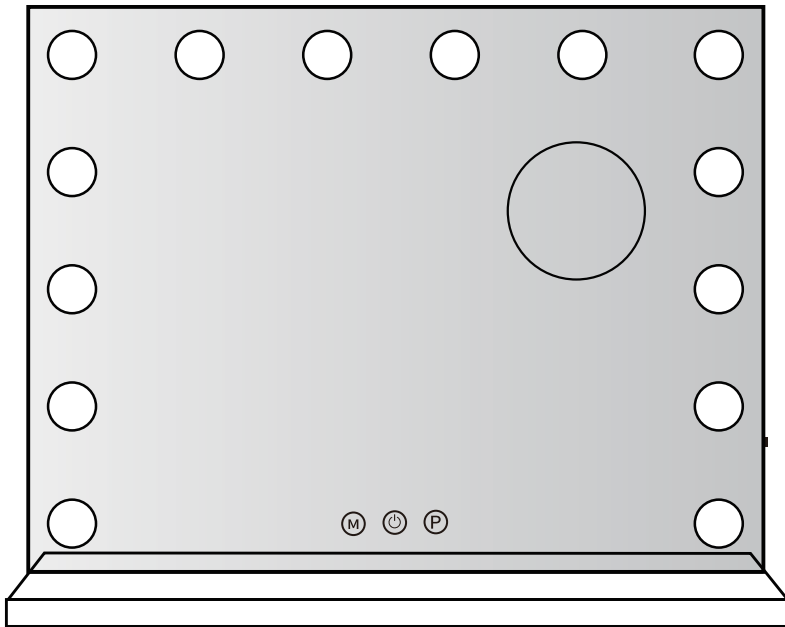


# Monika

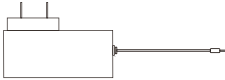
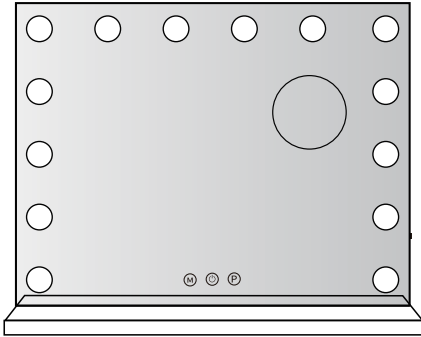
## ***OWNER'S MANUAL***

**60X52CM MAKEUP MIRROR**

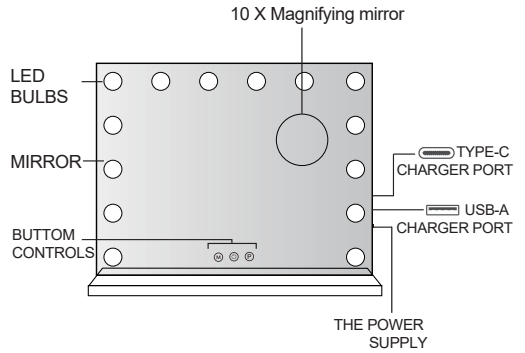


**MK031**

## PACKAGE INCLUDED



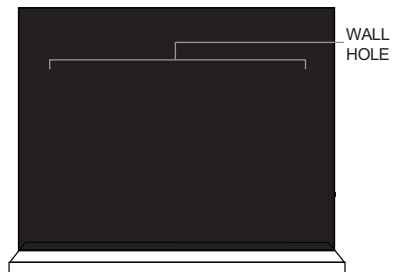
## SECURITY INSTRUCTIONS



AUSTRALIAN

## MAKEUP MIRROR SAFETY WARNINGS

- ⚠ Please read all instructions carefully.
- ⚠ Retain instructions for future reference.
- ⚠ Separate and count all parts and hardware.
- ⚠ Read through each step carefully and follow the proper order.
- ⚠ We recommend that, where possible, all items are assembled near to the area in which they will be placed in use, to avoid moving the product unnecessarily once assembled.
- ⚠ Always place the product on a flat, steady and stable surface.
- ⚠ Keep all small parts and packaging materials for this product away from babies and children as they potentially pose a serious choking hazard.



## BUTTON CONTROLS



M BUYON



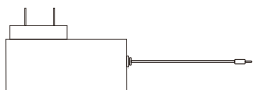
POWER



P BUTTON

- Ⓜ Short press to change the light color: warm/ natural/ cool
- Ⓢ Short press to turn on/ off the light
- Ⓟ Long press to adjust the brightness

## CONTAINED ITEMS

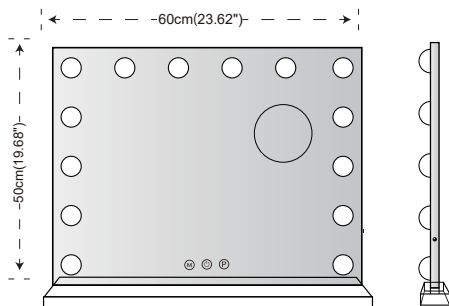


12V Power Adapter

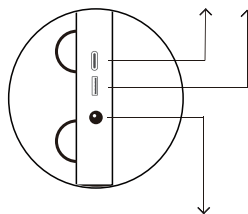
Input 110-240V Output 12V 1A

Please use included power adapter, Do not use an unsuitable power adapter, otherwise it could damage the mirror electronics.

## PRODUCT SIZE



CONNECT USB/TYPER-C CORD TO CHARGE  
YOUR PHONE OR OTHER DEVICES.



Connect the power to use LED Mirror lights.  
Disconnect the power to off LED Mirror lights.

## INSTALLATION STEPS

### PREPARATION TOOLS ( NOT INCLUDED )



Screwdriver



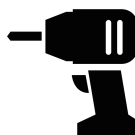
Tape Measure



Pencil



Level Ruler

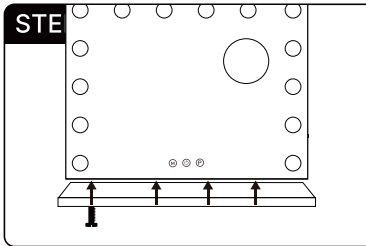


Electric Drill

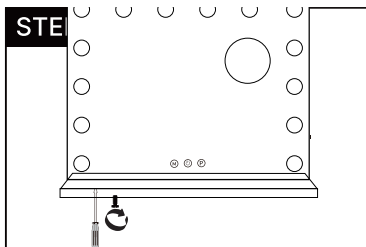


Hammer

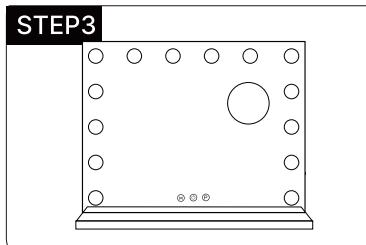
## DESKTOP



Unscrew the screws at the bottom of the mirror.

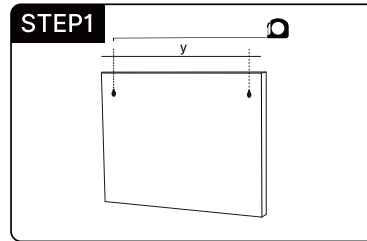


Align the holes on the base and the bottom of the mirror, and tighten the screws.

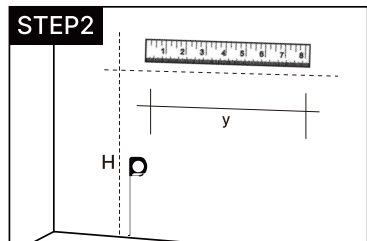


Installation is completed.

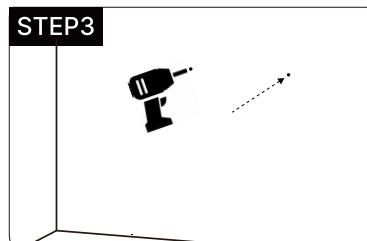
## WALL-MOUNTED



Use tape to measure the distance between the two hooks.



Use pencil to draw parallel lines on the wall. The intersection is the punch position.



Use electric drill to punch holes at the intersection.

## WARRANTY

Your warranty form should be retained by you at all times. In order to make a claim under this warranty, you must return the product with your receipt of purchase. Prior to returning your product for warranty. Please contact us via our after sales support services.

**EMAIL: [support@topto.com.au](mailto:support@topto.com.au)**

### 1 YEAR REPLACEMENT WARRANTY

Your product is guaranteed for a period of 12 months from the original date of purchase and is intended for DIY (Do It Yourself) use only. If a product is defective, it will be replaced in accordance with the terms of this warranty. The warranty excludes consumable parts, for example: driver

### WARNING

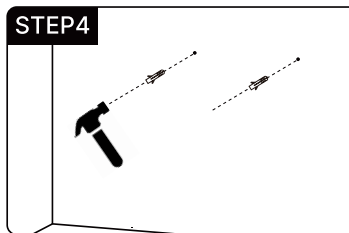
The following actions will result in the warranty being voided:

1. Professional, Industrial or high frequency use.
2. If the tool has been operated on a supply voltage other than that specified on the tool.
3. If the tool shows signs of damage or defects caused by or resulting from abuse, accidents or alterations.
4. Failure to perform maintenance as set out within the instruction manual.
5. If the tool is disassembled or tampered with in any way.

### How to get 1 extended year warranty?

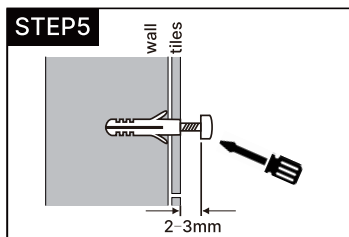
This product comes with 1 year replacement warranty. However, you may get 1 extra year warranty with conditions. Please ask for detail by sending an email to [support@topto.com.au](mailto:support@topto.com.au)

#### STEP4



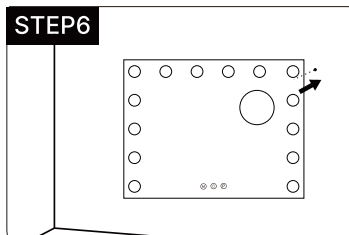
Use hammer to drive the expansion tube into the hole

#### STEP5



Use screwdriver to screw the screw into the expansion tube.

#### STEP6



Hang up the mirror, installation is completed.

Monika

# MAKEUP MIRROR

Monika®

CUSTOMER SERVICE  
& PARTS

Contact: [support@topto.com.au](mailto:support@topto.com.au)