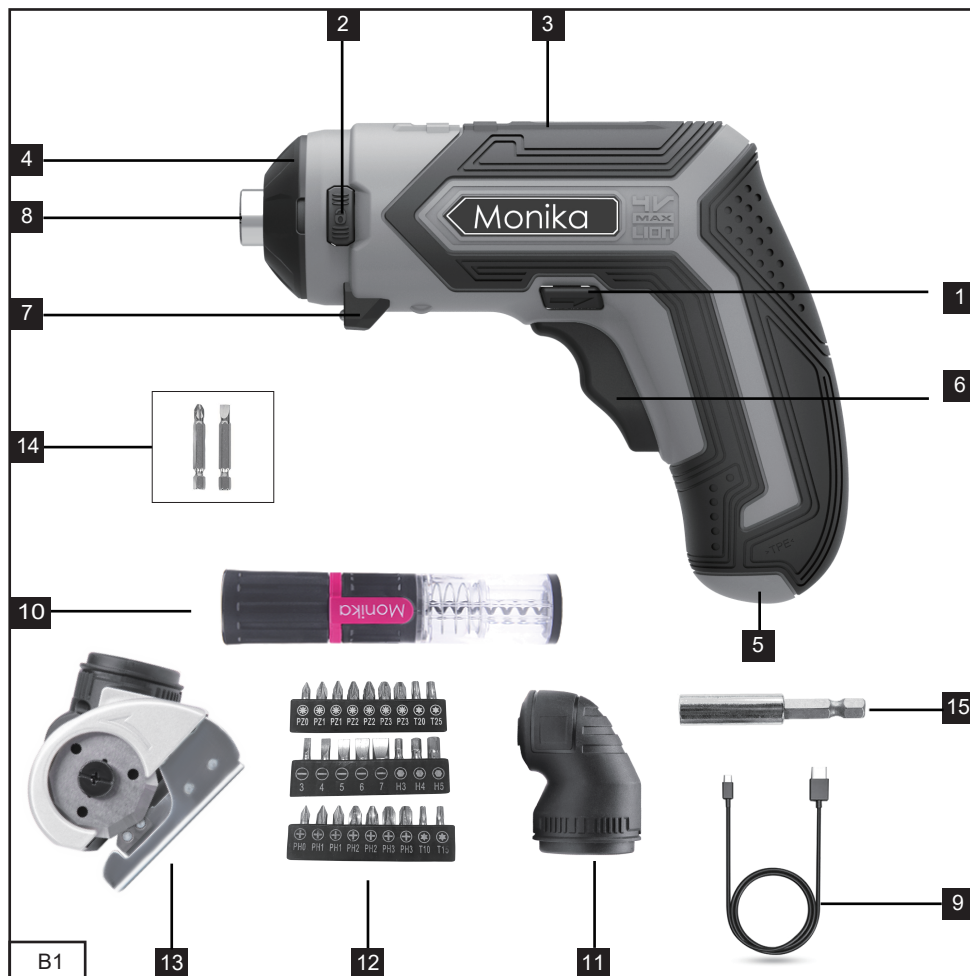


Monika

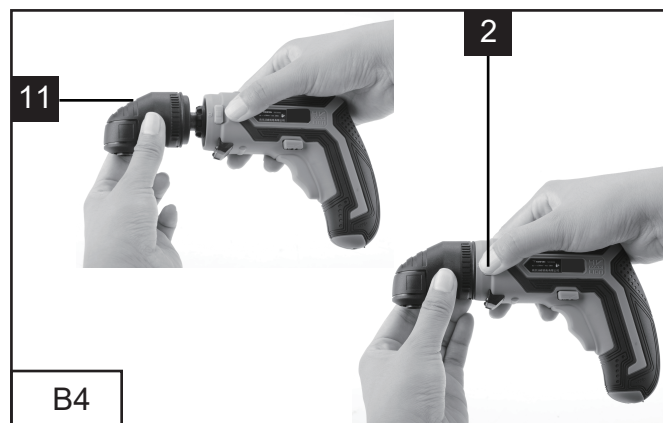
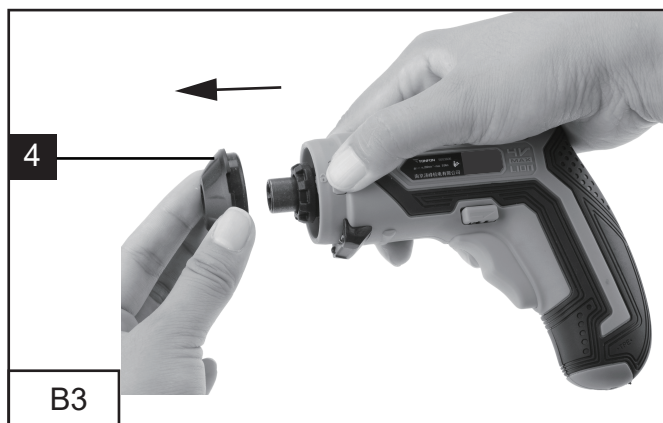
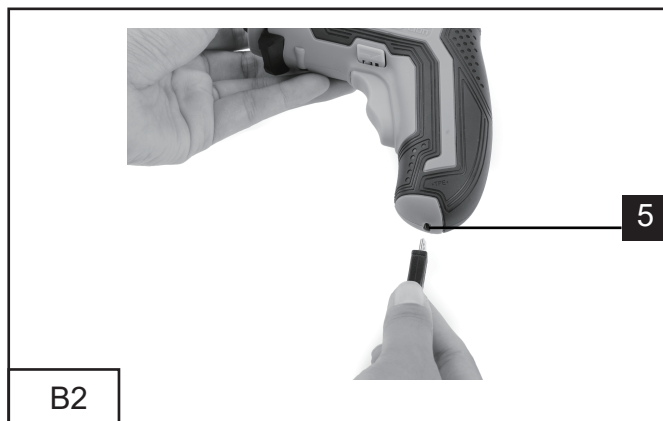
OWNER'S MANUAL

4V SCREWDRIVER SET





1. Rotation direction switch/safety lock-out
2. Lock button
3. Battery charge level indicator
4. Rubber cap
5. Charging socket (appliance)
6. ON/OFF switch
7. LED lamps
8. Tool holder
9. USB charger
10. Bottle opener
11. Angle attachment
12. 25mm screw bits
13. Cutting attachment
14. 50mm screw bits
15. Screw bits connector



1. Introduction

Congratulations on the purchase of your new appliance.

You have chosen a high-quality product. The operating instructions are part of this product. They contain important information about safety, usage and disposal. Before using the product, please familiarise yourself with all operating and safety instructions.

Use the product only as described and for the range of applications specified. Please also pass these operating instructions on to any future owner.

2. Intended use

This appliance is designed for screwing into wood, plastic and metal. The cutting attachment is designed exclusively for cutting soft materials, such as card and similar materials up to a thickness of 6 mm. Use this product only as described and for the areas of applications specified. The appliance is not intended for commercial use. Any other usage or modification of the appliance is deemed to be improper and carries a significant risk of accidents. The manufacturer accepts no responsibility for damage(s) attributable to misuse.

3. General Power Tool Safety Warnings

WARNING!

Read all safety warnings and all instructions.

Failure to follow the safety information and instructions may result in electric shock, fire and/or serious injury.

Save all warnings and instructions for future reference.

The term "power tool" in the warnings refers to your mains-operated (corded) power tool or batteryoperated (cordless) power tool.

1. Work area safety

a) Keep your work area clean and well lit.

Cluttered or dark areas invite accidents.

b) Do not operate power tools in explosive atmospheres, such as in the presence of flammable liquids, gases or dust. Power tools create sparks which may ignite the dust or fumes.

c) Keep children and bystanders away while operating a power tool. Distractions can cause you to lose control.

2. Electrical safety

a) Power tool plugs must match the outlet. Never modify the plug in any way. Do not use any adapter plugs with earthed (grounded) power tools. Unmodified plugs and matching outlets will reduce risk of electric shock.

b) Avoid body contact with earthed or grounded surfaces, such as pipes, radiators, ranges and refrigerators. There is an increased risk of electric shock if your body is earthed or grounded.

c) Do not expose power tools to rain or wet conditions. Water entering a power tool will increase the risk of electric shock.

d) Do not abuse the mains cable. Never use the cable for carrying, pulling or unplugging the power tool. Keep mains cable away from heat, oil, sharp edges or moving parts. Damaged or entangled cables increase the risk of electric shock.

e) When working outdoors with an electrical power tool always use extension cords that are also suitable for use outdoors. The use of an extension cord suitable for outdoor use reduces the risk of electric shock.

f) If operating a power tool in a damp location is unavoidable, use a residual current device (RCD) protected supply. Use of an RCD reduces the risk of electric shock.

3. Personal safety

a) Stay alert, watch what you are doing and use common sense when operating a power

tool. Do not use a power tool while you are tired or under the influence of drugs, alcohol or medication. A moment of inattention while operating power tools may result in serious personal injury.

b) Use personal protective equipment.

Always wear eye protection. Protective equipment such as a dust mask, non-skid safety shoes, a hard hat, or hearing protection, depending on the type and use of the electric tool, will reduce the risk of personal injuries.

c) Prevent unintentional starting. Ensure the switch is in the off position before connecting to power source and/or battery pack, picking up or carrying the tool. Carrying the power tool with your finger on the ON/OFF switch or connecting the power tool to the mains supply whilst it is switched on can lead to serious accidents.

d) Remove any adjusting key or wrench before turning the power tool on. A tool or wrench attached to a rotating component of the power tool can cause serious injuries.

e) Do not overreach. Keep proper footing and balance at all times. This enables better control of the power tool in unexpected situations.

f) Dress properly. Do not wear loose clothing or jewellery. Keep your hair and clothing away from moving parts. Loose clothes, jewellery or long hair can be caught in moving parts.

g) If devices are provided for the connection of dust extraction and collection facilities, ensure these are connected and properly used. The use of an extraction system can reduce hazards caused by dust.

h) Do not allow yourself to get lulled into a false sense of security and do not ignore the safety regulations for power tools, even if you are familiar with the power tool after

repeated use. Careless handling can lead to serious injuries within a fraction of a second.

This appliance is not intended for use by persons (including children) with reduced physical, sensory or mental capabilities, or lack of experience and knowledge, unless they have been given supervision or instruction concerning use of the appliance by a person responsible for their safety.

Children should be supervised to ensure that they do not play with the appliance.

4. Power tool use and care

a) Do not overload the power tool. Use the correct power tool for your application.

The correct power tool will do the job better and more safely at the rate for which it was designed.

b) Do not use the power tool if the switch does not turn it on and off. Any power tool that cannot be controlled with the switch is dangerous and must be repaired.

c) Disconnect the plug from the power source and/or remove a removable battery pack before making any adjustments, changing accessories, or storing the power tool. precaution is intended to prevent you from unintentionally starting the device.

d) Store idle power tools out of the reach of children. Do not allow anyone to operate the device who is not familiar with the device or who has not read these instructions. Power tools are dangerous if used by people who are inexperienced.

e) Look after power tools and accessories with care. Check for misalignment or binding of moving parts, breakage of parts and any other condition that may affect the power tool's operation. Arrange for damaged components to be repaired before using the power tool. Many accidents are caused by poorly maintained power tools.

f) Keep cutting tools sharp and clean. Properly maintained cutting tools with sharp cutting edges are less likely to bind and are easier to control.

g) Use the power tool, accessories and accessory tools etc. in accordance with these instructions, taking into account the working conditions and the work to be performed.

Slippery

The use of power tools for purposes other than those intended can result in hazardous situations.

h) Keep the handles and handle surfaces dry, clean and free from oil and grease.

handles and handle surfaces do not allow safe use and operation of the power tool in unforeseen situations.

5. Service

a) Have your power tool serviced by a qualified repair person using only identical replacement parts. This will ensure that the safety of the power tool is maintained.

6. Use and handling of the cordless electrical power tool

a) Charge the rechargeable battery unit using only the charger recommended by the manufacturer. Chargers are often designed for a particular type of rechargeable battery unit. There is a risk of fire if the battery charger specified for a particular type of battery is used with other batteries.

b) Only the rechargeable battery units supplied are to be used with an electrical power tool. The use of other rechargeable batteries may result in injury or a fire hazard.

c) When they are not being used, store rechargeable battery units away from paper clips, coins, keys, nails, screws or other small metal objects that could cause the contacts to be bridged. Short-circuiting the contacts of a rechargeable battery unit may result in heat damage or fire.

d) Fluids may leak out of rechargeable battery units if they are misused. If this happens, avoid contact with the fluid. If contact occurs, flush the affected area with water. Seek additional medical help if any of the fluid gets into your eyes. Escaping battery fluid may cause skin irritation or burns.

⚠ CAUTION! RISK OF EXPLOSION!
Never charge non-rechargeable batteries!

Protect the rechargeable battery from heat, for example from continuous exposure to sunlight, fire, water and moisture. There is a risk of explosion.

4. Safety guidelines for screw drivers

⚠ WARNING!

Hold power tool by insulated gripping surfaces, when performing an operation where the fastener may contact hidden wiring or its own cord. If a screw comes into contact with a live wire, this may make exposed metal parts of the power tool live and could give the operator an electric shock.

5. Extended safety guidelines

- Do not use a damaged or modified battery.

Damaged or modified batteries may behave unexpectedly and cause fires, explosions or pose a risk of injury.

- Do not expose a battery to fire or excessively

high temperatures. Fire or temperatures in excess of 130°C (265°F) can cause an explosion.

- Follow all instructions regarding charging and never charge the battery or the cordless tool outside of the temperature range given in the operating instructions. Incorrect charging or charging outside of the permissible temperature range can destroy the battery and increase the risk of fire.

6. Safety guidelines for the cutting attachment

DANGER !

- Keep your hands clear of the cutting area and the cutting blade.
- Before carrying out any work on the appliance, ensure that the rotation direction switch is in the middle. This prevents unintentional

switching on.

- Do not cut unless the blade guard is fully functional. Defective blade guards will not protect you against unintentional contact with the cutting blade.
- Before each use, check whether the blade guard is perfect condition and that the cutting blade is firmly fitted.
- Always use cutting blades of the correct size and with an appropriate central fixing bore.

7. Safety guidelines for battery chargers

This appliance may be used by children aged 8 years and above and by persons with limited physical, sensory or mental capabilities or lack of experience and knowledge, provided that they are under supervision or have been told how to use the appliance safely and are aware of the potential risks. Do not allow children to use the appliance as a plaything. Cleaning and user maintenance tasks may not be carried out by children unless they are supervised. The charger is suitable for indoor use only. If the connecting cable needs to be replaced, this must be carried out by the manufacturer or an official representative in order to avoid safety hazards.

8. Description of symbols

Pay attention to all the signs and symbols shown in these instructions and on your tool. Make a note of these signs and symbols. If you interpret the signs and symbols correctly, your work with the machine will be safer and better.



Important.



Read the instructions for use before starting the machine.



Wear safety goggles.



Wear ear protection.



Wear good quality, strong gloves.



Always use breathing apparatus when machining materials which generate dust.



End of life machines contain valuable materials and therefore they should not be placed in household waste.

We would ask you to play your part in protecting resources and help protect the environment by returning this machine to a return point (if one is available) when it reaches the end of its life.



Class II



Read through the instruction manual carefully.



The recharger is for indoor use only.



Pole orientation

9. Features

1. Rotation direction switch/safety lock-out
2. Lock button
3. Battery charge level indicator
4. Rubber cap
5. Charging socket (appliance)
6. ON/OFF switch
7. LED lamps
8. Tool holder
9. USB Charger
10. Bottle opener
11. Angle attachment
12. 25mm screw bits
13. Cutting attachment
14. 50mm screw bits
15. Screw bits connector

Package contents

- 1 Cordless screwdriver
- 1 USB wire
- 1 Carrying tool bag
- 2 50mm screw bits
- 1 Bottle opener
- 26 25mm Screw bits
- 1 Angle attachment
- 1 Cutting attachment
- 1 Screw bits connector

10. Before use

Charging the appliance battery (see fig. 2) NOTE

- The battery is supplied partially charged. Before first use, charge the battery in the charger for at least 1 hours. This guarantees full battery power. Li-ion batteries can be charged at any time without adversely affecting their service life. Interruption of the charging process will not damage the battery.
- If the battery charge level indicator (3) lights up red during use, the battery is at less than 30% of its capacity and needs to be charged.
- Never charge the cordless appliance when

the ambient temperature is below 10°C or above 40°C. If a lithium-ion battery is to be stored for an extended period, the charge level should be checked regularly. The optimum charge level is between 50% and 80%. The storage climate should be cool and dry and the ambient temperature should be between 0°C and 50°C.

Start charging:

- Connect the charger (9) to a 100–240 V~ 50/60 Hz power source.
 - Connect the charger (9) to the charging socket (5) on the device.
- The battery is fully charged when the battery level indication (3) changes from red to green.

Stop charging:

- Disconnect the charger (9) from the mains power supply.
- Disconnect the charger (9) from the charging socket (5) on the device.

Assemble the attachments

Usage:

- With the torque attachment (10) screwing stops as soon as the screw is tight. Set the required torque from one of the 10 levels.
- The angle attachment (11) allows you to screw at right angles.
- The cutting attachment (13) allows you to cut soft materials, such as card and similar materials up to a thickness of 6 mm.

Assembly:

NOTE

- Before carrying out any work on the appliance, ensure that the rotation direction switch (1) is in the middle. This prevents unintentional switching on.
- Start by removing the rubber cap (4) from the tool holder (see fig. 3).
 - Now you can fit the supplied attachments to

the appliance. To do this, fit the attachment onto the appliance and turn it in the direction of the arrow so that the attachment clicks into place (see fig. 4, example torque attachment (10)).

Dismantling:

- To remove the attachments from the appliance, press the locking button (2) and pull the attachment away from the arrow. Now the attachment can be pulled forwards and off the appliance.
- Afterwards, replace the rubber cap on the tool holder.

Changing bits/screw driver bits (see fig. 5)

Inserting:

- Insert the bit into the tool holder (8).

Removal:

- Pull the bit out of the tool holder (8).

11. Operation

Switching the cordless screwdriver on/off

Switching on:

- To start the appliance, press the ON/OFF switch (6) and keep it pressed in.

Switching off:

- Release the ON/OFF switch (6) to switch off the appliance.

Changing the direction of rotation

Clockwise:

- Push the rotation direction switch (1) to the left.
- Press the ON/OFF switch (6). You can now screw in the screws.

Anti-clockwise:

- Push the rotation direction switch (1) to the right.
- Press the ON/OFF switch (6). You can now unscrew the screws.

Safety lock-out:

Push the rotation direction switch (1) into the middle position. The ON/OFF switch (6) is blocked.

NOTE

When the ON/OFF switch (6) is locked it is

still possible to activate the LED lamps (7).

To do this, press the ON/OFF switch (6).

Tips and tricks

Screw bits are labelled according to their dimensions and their shape. If you are unsure, always try the particular screw bit out to see whether it sits in the screw head without any free play.

12. Technical data

| | |
|-----------------------|----------------|
| Nominal voltage: | 4 V (DC) |
| Battery (integrated): | (1 cell) |
| Battery capacity: | 1500 mAh |
| Rated idle speed: | n 0200 rpm |
| Torque: | max. 5.0 Nm |
| Tool holder: | 6.35 mm (1/4") |

Noise and vibration data:

The measured values have been determined in accordance with EN 60745. The A-rated noise level of the tool is typically:

Sound pressure level: L_{pA} 66,2 dB (A)

Sound power level: L_{WA} 77,2 dB (A)

Uncertainty K: $K_{pA/WA}$ 3 dB

Vibration values (vector total of three directions) determined in accordance with EN 60745:

Screws:

Vibration emission value: $a_1 < 2.5 \text{ m/s}^2$

Uncertainty: K = 1.5 m/s^2

NOTE

The vibration level specified in these instructions has been measured in accordance with a standardised measuring procedure and can be used for equipment comparisons. The specified vibration emission value can also be used to make an initial exposure estimate.

WARNING!

The vibration level will vary according to the use of the power tool and may sometimes be higher than the value specified in these instructions.

Regular use of the power tool in this way may cause the user to underestimate the vibration. To estimate the vibration load during a specific working period accurately, periods during which the appliance is switched off (or running, but not being used) must also be taken into account. This can significantly reduce the vibration load over the total working period.

13. Maintenance, storage and cleaning

⚠ WARNING! RISK OF ELECTRIC SHOCK! Before cleaning, disconnect the charger (9) from the mains socket.

NOTE

- Before carrying out any work on the appliance, ensure that the rotation direction switch (1) is in the middle. This prevents unintentional switching on.
- The cordless screwdriver is maintenance-free.
- The appliance must always be kept clean, dry and free from oil or grease.
- Never allow liquids to get into the appliance.
- Use a cloth to clean the housing. Never use petrol, solvents or cleansers which can damage plastic.

⚠ WARNING!

- Remove the attachments before cleaning. Clean them with a dry cloth.
- Always ensure the appliance and attachments are clean, free of dust and dry before storing.

14. Disposal**Do not dispose of power tools in your normal household waste!**

In accordance with European Directive 2012/19/EU on Waste Electrical and Electronic Equipment and its integration into national law, used power tools must be disposed of separately and recycled in an environmentally friendly manner.

Your local community or municipal authorities can provide information on how to dispose of the appliance.

**Do not dispose of batteries in your normal household waste!**

Defective or worn-out rechargeable batteries must be recycled according to Directive 2006/66/EC.

Take the battery pack and/or appliance to a nearby collection facility.

Please consult your local authorities regarding suitable disposal of worn out power tools/ battery packs. The integrated lithium-ion battery may

only be removed by trained personnel.

To remove the battery from the housing, the battery must be empty and the screws unscrewed from the housing.

The connections on the battery must individually be disconnected and isolated.

Monika

4V SCREWDRIVER SET

Warranty

Your warranty form should be retained by you at all times. In order to make a claim under this warranty you must return the product with your receipt of purchase. prior to returning your product for warranty. please contact us via our after sales support services.

EMAIL: support@topto.com.au

Environmental protection



Recycle unwanted materials instead of disposing of them as waste. All tools, hoses and packaging should be sorted, taken to the local recycling centre and disposed of in an environmentally safe way. Dispose of used engine oil in a manner that is compatible with the environment. We suggest you take it in a sealed container to your local service station for reclamation. Do not throw it in the trash or pour it into the earth.

1 YEAR REPLACEMENT WARRANTY

Your product is guaranteed for a period of 12 months from the original date of purchase and is intended for DIY (Do It Yourself) use only. If a product is defective it will be replaced in accordance with the terms of this warranty. Warranty excludes consumable parts, for example: driver bits.

WARNING

1. The following actions will result in the warranty being void.
Professional, Industrial or high frequency use.
2. If the tool has been operated on a supply voltage other than that specified on the tool.
3. If the tool shows signs of damage or defects caused by or resulting from abuse, accidents or alterations.
4. Failure to perform maintenance as set out within the instruction manual.
5. If the tool is disassembled or tampered with in any way.

How to get 1 extended year warranty?

This product comes with 1 year replacement warranty. However, you may get 1 extra year warranty with conditions. Please ask for detail by sending an email to **support@topto.com.au**

Monika[®]

CUSTOMER SERVICE
& PARTS

Contact: support@topto.com.au